

## EPIC® POWER M17 A3

Circular connectors for servomotors and power supply

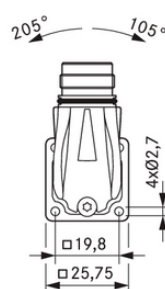
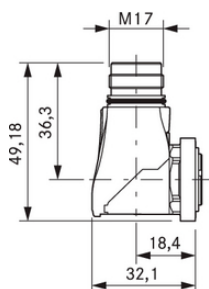
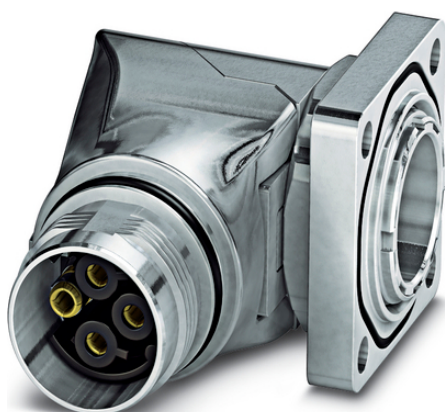
EPIC® M17 POWER panel mount base angled, swivel

### Info

rotateable with 310° cable outlet

The contacts have to be ordered separately

Made in Germany



Mechanical and plant engineering



Mechanical resistance



Optimum strain relief



Space requirement



Interference signals



Waterproof

### Benefits

Version with less contacts for higher current  
sensor/ ac  
EMC protection

### Application range

Servo drives and servo assemblies  
Plant engineering, machinery manufacturing

### Technical Data

Classification ETIM 5:

ETIM 5.0 Class-ID: EC002635

Last Update (23.04.2024)

©2024 Lapp Group - Technical changes reserved

Product Management [www.lappkabel.de](http://www.lappkabel.de)

You can find the current technical data in the corresponding data sheet.

PN 0456 / 02\_03.16

## EPIC® POWER M17 A3

Classification ETIM 6:	ETIM 5.0 Class-Description: Circular connector (industrial connector) ETIM 6.0 Class-ID: EC002635 ETIM 6.0 Class-Description: Circular connector (industrial connector)
Rated voltage (V):	630V: 2mm and 1mm contacts 60V: 0,6mm contacts
Rated impulse voltage:	6KV: 2mm and 1mm contacts 1.5KV: 0.6mm contacts
Rated current (A):	3+PE: 20A, 5+PE/6+PE/7+PE:14A, 3+PE+5:14A/3,6A
Pollution degree:	3
Contacts:	Gold-plated brass
Number of contacts:	3+PE, 5+PE, 6+PE, 7+PE, 3+PE+5 Contacts:3+PE(2mm), 5+PE(1mm), 6+PE(1mm), 7+PE(1mm), 3+PE+5(1mm/0.6mm)
Termination methods:	Crimp: 3+PE: 0.5-2.5mm <sup>2</sup> , 5+PE/6+PE/7+PE: 0.06-1mm <sup>2</sup> , 3+P+5: 0.06-1/0.06-0.5mm <sup>2</sup>
Material:	Housing: nickel-plated zinc die-casting, nickel-plated brass Insert: PA, Seal: FPM
Protection rating:	IP 67
Cycle of mechanical operation:	100
Temperature range:	-40°C to +125°C

### Note

Photographs and graphics are not to scale and do not represent detailed images of the respective products.  
Prices are net prices without VAT and surcharges. Sale to business customers only.

**EPIC® POWER M17 A3**

Article number	Article description	Fastening type	Pin configuration	Pieces / PU
Type M17 A3, angled and rotateable				
44423085	EPIC® M17 female	Ø 2.7 mm (4x)	3+PE (2mm contacts)	5
44423080	EPIC® M17 male	Ø 2.7 mm (4x)	3+PE (2mm contacts)	5
44423086	EPIC® M17 female	Ø 2.7 mm (4x)	5+PE (1mm contacts)	5
44423081	EPIC® M17 male	Ø 2.7 mm (4x)	5+PE (1mm contacts)	5
44423087	EPIC® M17 female	Ø 2.7 mm (4x)	6+PE (1mm contacts)	5
44423082	EPIC® M17 male	Ø 2.7 mm (4x)	6+PE (1mm contacts)	5
44423088	EPIC® M17 female	Ø 2.7 mm (4x)	7+PE (1mm contacts)	5
44423083	EPIC® M17 male	Ø 2.7 mm (4x)	7+PE (1mm contacts)	5
44423089	EPIC® M17 female	Ø 2.7 mm (4x)	3+PE+5 (1mm/0.6mm contacts)	5
44423084	EPIC® M17 male	Ø 2.7 mm (4x)	3+PE+5 (1mm/0.6mm contacts)	5