

## EPIC® H-A 3 AGSV

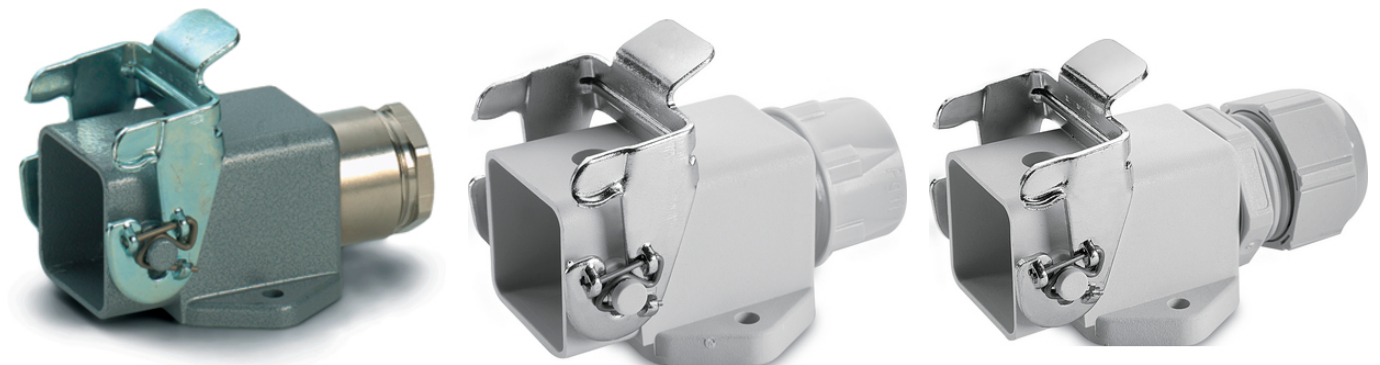
Innovative metal and plastic housing design

The robust compact base housing consists of one lever and a cable entry and is ideal for supplying power in restricted spaces.

### Info

Lightweight, chemically resistant plastic housing

Protection rating UL50E tested



Mechanical and plant engineering



Mechanical resistance



Robust



Waterproof

### Benefits

Housing in plastic or metal version for safe connections in the smallest possible space

### Application range

Machine and equipment manufacturing

Control engineering

Electronic laboratory

### Product features

Surface-mount base

1 lever

1 cable entry

Versions with / without cable gland

Last Update (24.04.2024)

©2024 Lapp Group - Technical changes reserved

Product Management [www.lappkabel.de](http://www.lappkabel.de)

You can find the current technical data in the corresponding data sheet.

PN 0456 / 02\_03.16

## EPIC® H-A 3 AGSV

### Technical Data

Classification ETIM 5:	ETIM 5.0 Class-ID: EC000437 ETIM 5.0 Class-Description: Housing for industrial connectors
Classification ETIM 6:	ETIM 6.0 Class-ID: EC000437 ETIM 6.0 Class-Description: Housing for industrial connectors
Material:	Housing: powder-coated zinc die-casting, grey Lever: zinc-plated steel Sealing: NBR Housing: grey thermoplastic, black Lever: zinc-plated steel Sealing: NBR
Protection rating:	IP 65 (latched) NEMA 250, UL50E: 12, 4 (latched)
VDE-tested:	Certified production control: VDE-REG. no.: B437 UL-tested: UL File Number: E75770
Temperature range:	-40°C to +100°C, short-term up to +125°C

### Note

Photographs and graphics are not to scale and do not represent detailed images of the respective products.  
Prices are net prices without VAT and surcharges. Sale to business customers only.

## EPIC® H-A 3 AGSV

Article number	Article description	M	PG	Material	Colour	Cable gland	Cable clamping range	Pieces / PU
H-A housing: surface-mount base (1 cable entry, single lever)								
10512700	H-A 3 MAgsv	-	11	Zinc die-casting	grey	-	-	10
10424000	H-A 3 Agsv	-	11	Thermoplastic	grey	-	-	10
10424500	H-A 3 MAgsv	-	11	Zinc die-casting	grey	yes	6.5 - 12	10
10424200	H-A 3 Agsv	-	11	Thermoplastic	grey	yes	6.5 - 12	10
19512700	H-A 3 MAgsv M20	20	-	Zinc die-casting	grey	-	-	10
19421900	H-A 3 Agsv M20	20	-	Thermoplastic	grey	yes	6.0 - 13.0	10
19424500	H-A 3 MAgsv M20	20	-	Zinc die-casting	grey	yes	3 - 13.5	10

# EPIC® H-A 3 AGSV

