

EPIC® H-BE 10 Cage clamp

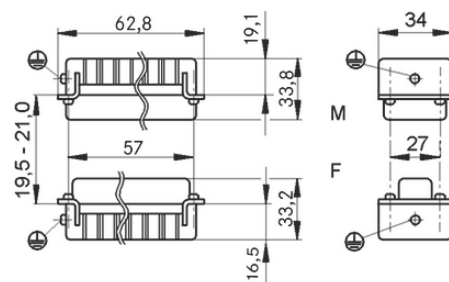
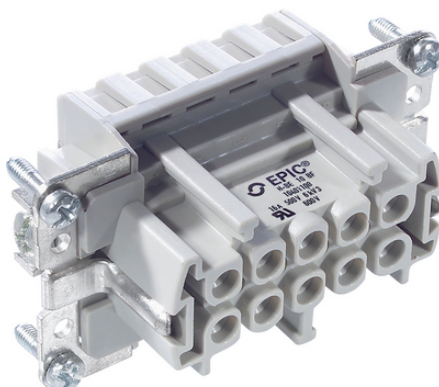
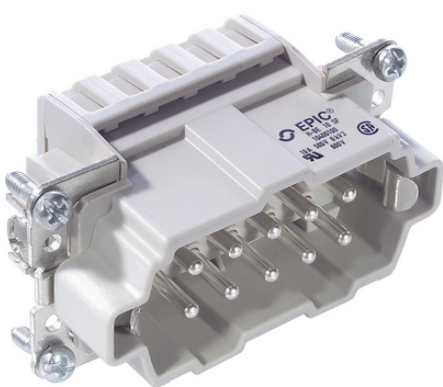
The proven standard inserts for easy assembly

The multi-functional insert with spring-type terminal can be used for higher voltages and currents and is highly reliable.

Info

Multifunctional insert for versatile applications

Screw, crimp, cage clamp and Push-In version - freely combinable



Supplementary automation components from Lapp



Mechanical and plant engineering



Assembly time



Robust



Temperature-resistant

Benefits

Standard inserts with screw, crimp cage clamp and Push-In termination

The EPIC® H-BE series is suitable for applications that require a reliable connection when working with high voltages and currents

Application range

Mechanical engineering

Light & sound technology

Plastics industry

Technical Data

Last Update (26.04.2024)

©2024 Lapp Group - Technical changes reserved

Product Management www.lappkabel.de

You can find the current technical data in the corresponding data sheet.

PN 0456 / 02_03.16

EPIC® H-BE 10 Cage clamp

Classification ETIM 5:	ETIM 5.0 Class-ID: EC000438 ETIM 5.0 Class-Description: Contact insert for industrial connectors
Classification ETIM 6:	ETIM 6.0 Class-ID: EC000438 ETIM 6.0 Class-Description: Contact insert for industrial connectors
Rated voltage (V):	IEC: 500 VUL: 600 VCSA: 600 V
Rated impulse voltage:	6 kV
Rated current (A):	IEC: 16 A UL: 16 A CSA: 16 A
Pollution degree:	3
Flammability:	UL94 V-2
Contact resistance:	1.5 - 4 mohm
Contacts:	Copper alloy, hard silver-plated
Number of contacts:	10 + PE
Termination methods:	Cage clamp termination: 0.5 - 2.5 mm ²
Stripping length (mm):	7
Material:	PC, polycarbonate
Cycle of mechanical operation:	100
Certifications:	UL-tested: UL File Number: E75770
Temperature range:	-40°C to +100°C, short-term up to +125°C

Note

Photographs and graphics are not to scale and do not represent detailed images of the respective products.
Prices are net prices without VAT and surcharges. Sale to business customers only.

EPIC® H-BE 10 Cage clamp

Article number	Article description	Contact type	Wire protection	Number of operating contacts	Pieces / PU
H-BE 10 cage clamp termination					
10400100	EPIC® H-BE 10 SF	male	yes	1 - 10	10
10401100	EPIC® H-BE 10 BF	female	yes	1 - 10	10