

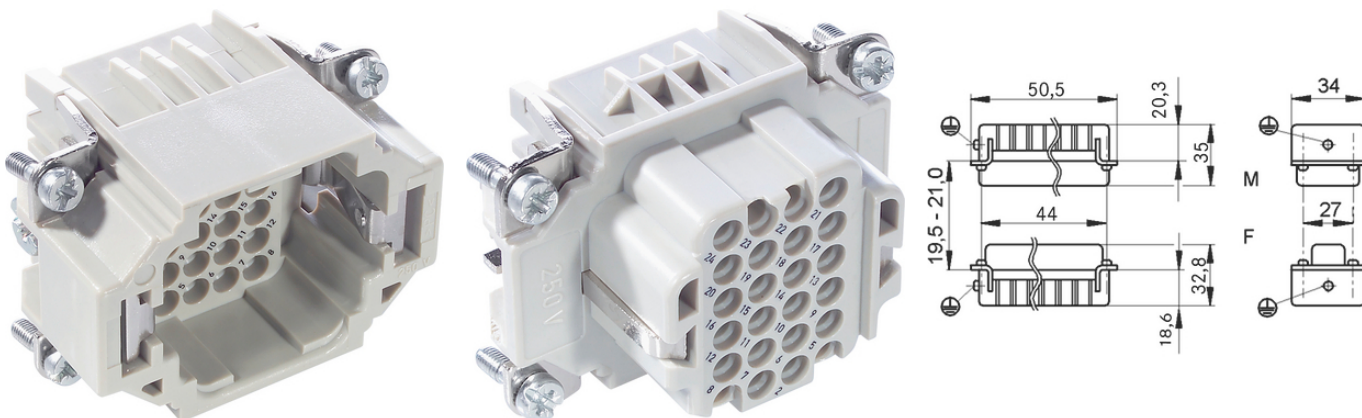
EPIC® H-DD 24

The H-DD series with machined crimp contacts - for a high number of pins in very tight spaces.

The connector insert with the highest density of pins for compact connectors is ideal, for example, for use in the plastics industry.

Info

Highest packing density for compact connectors



Mechanical and plant engineering



Space requirement

Benefits

The H-DD series with machined contacts is designed for a high number of pins in very tight spaces. This allows for smaller housing types to be chosen.

Application range

Mechanical engineering
Light & sound technology
Plastics industry

Technical Data

Classification ETIM 5:

ETIM 5.0 Class-ID: EC000438

ETIM 5.0 Class-Description: Contact insert for industrial connectors

Classification ETIM 6:

ETIM 6.0 Class-ID: EC000438

ETIM 6.0 Class-Description: Contact insert for industrial connectors

Rated voltage (V):

IEC: 250 V
UL: 600 V
CSA: 600 V

Last Update (04.05.2024)

©2024 Lapp Group - Technical changes reserved

Product Management www.lappkabel.de

You can find the current technical data in the corresponding data sheet.

PN 0456 / 02_03.16

EPIC® H-DD 24

Rated impulse voltage:	2.5 kV
Rated current (A):	IEC: 10 A UL: 8.5 A CSA: 10 A
Pollution degree:	2
Contact resistance:	< 3 mOhm
Contacts:	Copper alloy, hard silver/gold-plated
Number of contacts:	24 + PE
Termination methods:	Crimp termination: 0.14 - 2.5 mm ²
Cycle of mechanical operation:	100
VDE-tested:	Certified production control: VDE-REG. no.: B437 UL-tested: UL File Number: E75770
Temperature range:	-40 °C to +100 °C, short-term up to +125 °C

Note

Photographs and graphics are not to scale and do not represent detailed images of the respective products.
Prices are net prices without VAT and surcharges. Sale to business customers only.

EPIC® H-DD 24

Article number	Article description	Contact type	Article designation	Number of operating contacts	Pieces / PU
H-DD 24 crimp termination					
11285000	H-DD 24 SCM	male	machined	1 - 24	5
11286000	H-DD 24 BCM	female	machined	1 - 24	5