

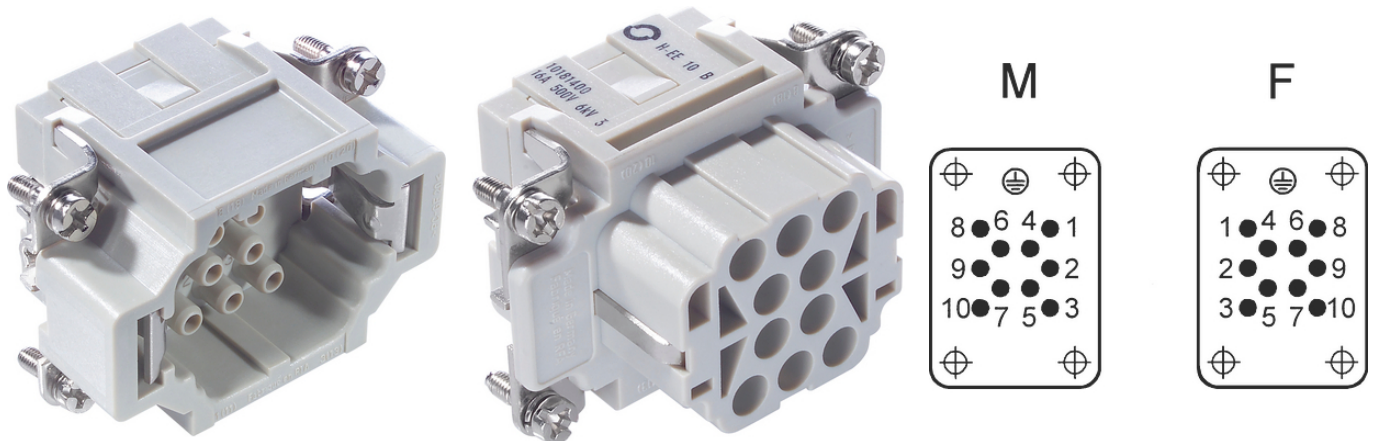
## EPIC® H-EE 10

H-EE inserts with high contact density based on the proven H-BE series.

The connector insert with a high density of contacts is intended for medium power outputs and is suitable for investment construction and mechanical engineering.

### Info

Inserts with high contact density for medium power



Mechanical and plant engineering



Temperature-resistant

### Benefits

The H-EE inserts with machined contacts for a high number of pins in very tight spaces.  
For assembly in H-B housing

### Application range

Mechanical engineering  
Plant engineering  
Appliance and apparatus construction

### Technical Data

Classification ETIM 5:

ETIM 5.0 Class-ID: EC000438

ETIM 5.0 Class-Description: Contact insert for industrial connectors

Classification ETIM 6:

ETIM 6.0 Class-ID: EC000438

ETIM 6.0 Class-Description: Contact insert for industrial connectors

Rated voltage (V):

IEC: 500 VUL: 600 VCSA: 600 V

Rated impulse voltage:

6 kV

Last Update (27.04.2024)

©2024 Lapp Group - Technical changes reserved

Product Management [www.lappkabel.de](http://www.lappkabel.de)

You can find the current technical data in the corresponding data sheet.

PN 0456 / 02\_03.16

**EPIC® H-EE 10**

|                                |  |
|--------------------------------|--|
| Rated current (A):             | IEC: 16 A<br>UL: 16 A<br>CSA: 16 A           |
| Pollution degree:              | 3  |
| Contact resistance:            | < 2 mOhm                                     |
| Contacts:                      | Copper alloy, hard silver/gold-plated        |
| Number of contacts:            | 10 + PE                                      |
| Termination methods:           | Crimp termination: 0.5 - 4.0 mm <sup>2</sup> |
| Cycle of mechanical operation: | 100  |
| VDE-tested:                    | UL-tested:<br>UL File Number: E75770         |
| Temperature range:             | -40°C to +100°C, short-term up to +125°C     |

**Note**

Photographs and graphics are not to scale and do not represent detailed images of the respective products.  
Prices are net prices without VAT and surcharges. Sale to business customers only.

**EPIC® H-EE 10**

| Article number            | Article description | Contact type | Article designation | Number of operating contacts | Pieces / PU |
|---------------------------|---------------------|--------------|---------------------|------------------------------|-------------|
| H-EE 10 crimp termination |                     |              |                     |                              |             |
| 10180400                  | H-EE 10 SC          | male         | machined            | 1 - 10                       | 10          |
| 10181400                  | H-EE 10 BC          | female       | machined            | 1 - 10                       | 10          |

## EPIC® H-EE 10

