

## EPIC® H-EE 46

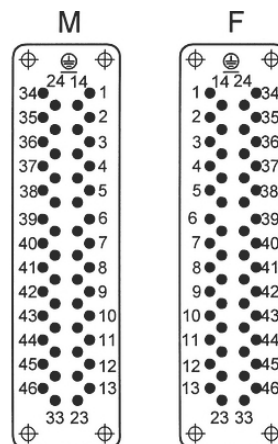
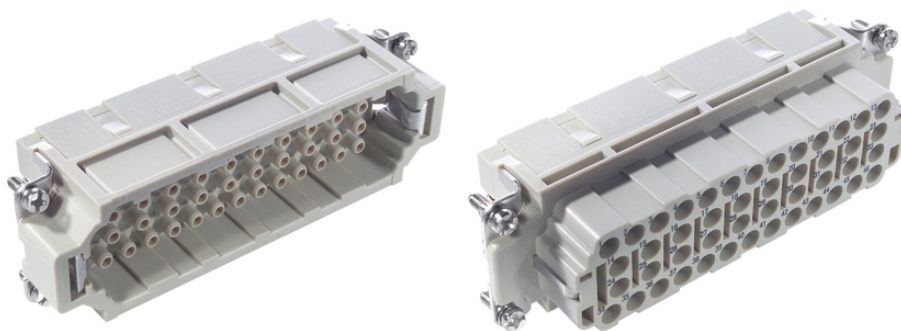
H-EE inserts with high contact density based on the proven H-BE series.

The H-EE insert with machined contacts is suitable for a high number of poles on a small area and for installation in H-B housing.

### Info

Inserts with high contact density for medium power

Also as EPIC® H-EE 92 available



Mechanical and plant engineering



Temperature-resistant

### Benefits

The H-EE inserts with machined contacts for a high number of pins in very tight spaces.  
For assembly in H-B housing

### Application range

Mechanical engineering

Plant engineering

Appliance and apparatus construction

### Technical Data

Classification ETIM 5:

ETIM 5.0 Class-ID: EC000438

ETIM 5.0 Class-Description: Contact insert for industrial connectors

Classification ETIM 6:

ETIM 6.0 Class-ID: EC000438

ETIM 6.0 Class-Description: Contact insert for industrial connectors

Rated voltage (V):

IEC: 500 VUL: 600 VCSA: 600 V

Rated impulse voltage:

6 kV

Last Update (27.04.2024)

©2024 Lapp Group - Technical changes reserved

Product Management [www.lappkabel.de](http://www.lappkabel.de)

You can find the current technical data in the corresponding data sheet.

PN 0456 / 02\_03.16

## EPIC® H-EE 46

Rated current (A):	IEC: 16 A UL: 16 A CSA: 16 A
Pollution degree:	3
Contact resistance:	< 2 mOhm
Contacts:	Copper alloy, hard silver/gold-plated
Number of contacts:	46 + PE
Termination methods:	Crimp termination: 0.5 - 4.0 mm <sup>2</sup>
Cycle of mechanical operation:	100
VDE-tested:	UL-tested: UL File Number: E75770
Temperature range:	-40 °C to +100 °C, short-term up to +125 °C

### Note

Photographs and graphics are not to scale and do not represent detailed images of the respective products.  
Prices are net prices without VAT and surcharges. Sale to business customers only.

**EPIC® H-EE 46**

Article number	Article description	Contact type	Article designation	Number of operating contacts	Pieces / PU
H-EE 46 crimp termination					
10186400	H-EE 46 SC	male	machined	1 - 46	5
10187400	H-EE 46 BC	female	machined	1 - 46	5

## EPIC® H-EE 46

