

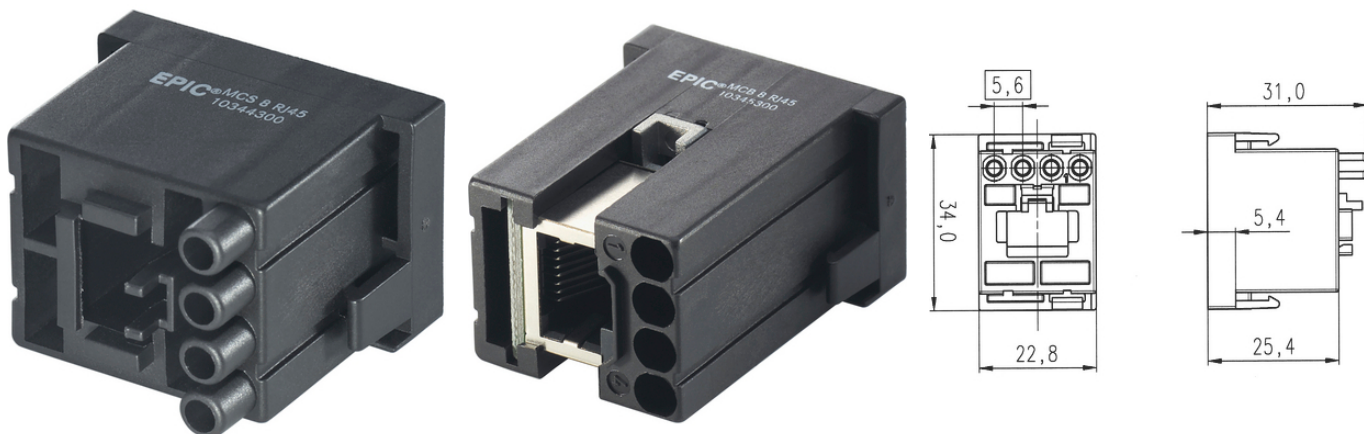
## EPIC® MC Module: RJ45

The mixed assembly guarantees high flexibility. For applications in machine and plant engineering, for robotics and slide-in technology.

The power module has 4 power and 8 data contacts and can be used in investment construction and control systems.

### Info

CAT.5-Performance



Supplementary automation components from Lapp



Mechanical and plant engineering



Wind Energy

### Benefits

The mix of different functions in one plug guarantees high flexibility  
 Assembly of individual connectors, suitable for different applications

### Application range

Plant engineering  
 Control engineering

### Technical Data

Classification ETIM 5:

ETIM 5.0 Class-ID: EC002641

ETIM 5.0 Class-Description: Modular connector (industrial connector)

Classification ETIM 6:

ETIM 6.0 Class-ID: EC002641

ETIM 6.0 Class-Description: Modular connector (industrial connector)

Rated voltage (V):

max. 600 V/max. 125 V

Rated current (A):

max. 10 A/max. 1.5 A

Pollution degree:

3

Contacts:

Copper alloy, gold-plated

Last Update (19.12.2024)

©2024 Lapp Group - Technical changes reserved

Product Management [www.lappkabel.de](http://www.lappkabel.de)

You can find the current technical data in the corresponding data sheet.

PN 0456 / 02\_03.16

## EPIC® MC Module: RJ45

Number of contacts:	4 Power + 8 Data
Termination methods:	Power: crimp termination: 0.14 - 2.5 mm <sup>2</sup> , Data: IDC/piercing termination: Cat5, AWG 24-26
Cycle of mechanical operation:	100
Temperature range:	-20 °C ... +85 °C

### Note

Photographs and graphics are not to scale and do not represent detailed images of the respective products. Prices are net prices without VAT and surcharges. Sale to business customers only.



## EPIC® MC Module: RJ45

Article number	Article description	Contact type	Number of operating contacts	Slots	Packaging unit
Module: RJ 45 (occupies 2 slots in the frame)					
10344300	MCS 8 RJ45	male	4 + 8 + PE	2	5
10345300	MCB 8 RJ45	female	4 + 8 + PE	2	5

Last Update (19.12.2024)

©2024 Lapp Group - Technical changes reserved

Product Management [www.lappkabel.de](http://www.lappkabel.de)

You can find the current technical data in the corresponding data sheet.

PN 0456 / 02\_03\_16

**EPIC® MC Module: RJ45**