

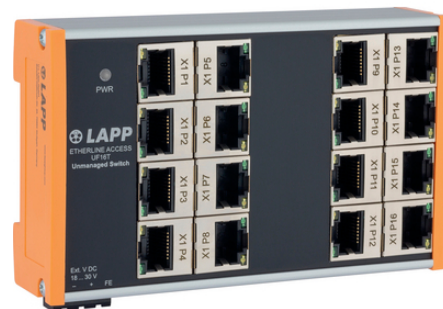
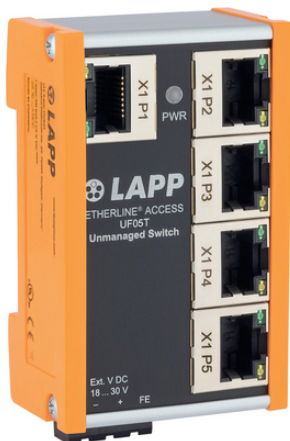
ETHERLINE® ACCESS UF

Industrial unmanaged Ethernet switches in compact design

Industrial network switches for ethernet based solutions in Smart Factories.

Info

compact design



Supplementary automation components from Lapp



Mechanical and plant engineering

Benefits

compact design with high port density

PROFINET®-enabled device

space saving and industrial grade DIN rail mounting

Application range

industrial networks

Product features

Switches with 5, 8 and 16 ports

RJ45 Ports: 10/100 BaseT(X)

Norm references / Approvals

UL 61010

Technical Data

power supply:

DC 24 V (18-30 V DC)

Protection rating:

IP20

Last Update (24.04.2024)

©2024 Lapp Group - Technical changes reserved

Product Management www.lappkabel.de

You can find the current technical data in the corresponding data sheet.

PN 0456 / 02_03.16

ETHERLINE® ACCESS UF

Temperature range: -25°C to +60°C

Note

Photographs and graphics are not to scale and do not represent detailed images of the respective products.
Prices are net prices without VAT and surcharges. Sale to business customers only.

ETHERLINE® ACCESS UF

Article number	Article designation	Type	number of ports	MTBF in years
21700144	ETHERLINE® ACCESS UF05T	Unmanaged	5 x RJ45	>35.55
21700145	ETHERLINE® ACCESS UF08T	Unmanaged	8 x RJ45	>29.70
21700146	ETHERLINE® ACCESS UF16T	Unmanaged	16 x RJ45	>16.62