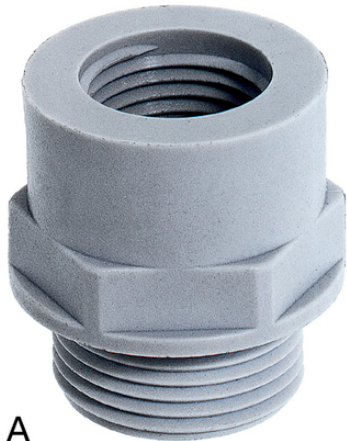


SKINDICHT® A-PG/M

SKINDICHT® A-PG/M Adapter from PG outer thread to M inner thread



A



B



Space requirement

Benefits

Allows easy transition from a PG external thread to a metric internal thread.

Application range

Housings
Industrial connectors
Machines

Product Make-up

PG connection thread

Product Make-up

Form A = high
Form B = flat

Technical Data

Classification ETIM 5:

ETIM 5.0 Class-ID: EC000441

ETIM 5.0 Class-Description: Cable screw gland

Classification ETIM 6:

ETIM 6.0 Class-ID: EC000441

ETIM 6.0 Class-Description: Cable screw gland

Colour delivered:

Light grey (RAL 7035)

Material:

Polyamide, glass fibre-reinforced

Temperature range:

-40 °C to +100 °C

Last Update (17.12.2024)

©2024 Lapp Group - Technical changes reserved

Product Management www.lappkabel.de

You can find the current technical data in the corresponding data sheet.

PN 0456 / 02_03.16

SKINDICHT® A-PG/M**Note**

Photographs and graphics are not to scale and do not represent detailed images of the respective products.
Prices are net prices without VAT and surcharges. Sale to business customers only.



SKINDICHT® A-PG/M

Article number	Form	Thread, male PG	Thread, female M2	SW wrench size mm	Pieces / PU
SKINDICHT® A-PG/M					
52100320	A	PG 7	12 x 1.5	16	25
52100321	A	PG 7	16 x 1.5	20	25
52100322	A	PG 9	12 x 1.5	20	25
52100323	A	PG 9	16 x 1.5	20	25
52100324	A	PG 9	20 x 1.5	24	25
52100325	A	PG 11	16 x 1.5	22	25
52100326	A	PG 11	20 x 1.5	24	25
52100327	A	PG 11	25 x 1.5	29	25
52100328	A	PG 13.5	16 x 1.5	24	25
52100329	A	PG 13.5	20 x 1.5	24	25
52100330	A	PG 13.5	25 x 1.5	29	25
52100331	A	PG 16	20 x 1.5	27	25
52100332	A	PG 16	25 x 1.5	29	25
52100333	A	PG 16	32 x 1.5	36	25
52100334	A	PG 21	25 x 1.5	33	10
52100335	A	PG 21	32 x 1.5	36	10
52100336	A	PG 21	40 x 1.5	46	10
52100337	B	PG 29	32 x 1.5	42	10
52100338	A	PG 29	40 x 1.5	46	10
52100339	A	PG 29	50 x 1.5	55	10
52100340	B	PG 36	40 x 1.5	53	10
52100341	A	PG 36	50 x 1.5	55	10
52100342	A	PG 36	63 x 1.5	68	10
52100343	B	PG 42	40 x 1.5	60	5
52100344	A	PG 42	50 x 1.5	60	5
52100345	A	PG 42	63 x 1.5	68	5
52100346	B	PG 48	50 x 1.5	65	5
52100347	A	PG 48	63 x 1.5	68	5

Last Update (17.12.2024)

©2024 Lapp Group - Technical changes reserved

Product Management www.lappkabel.de

You can find the current technical data in the corresponding data sheet.

PN 0456 / 02_03_16