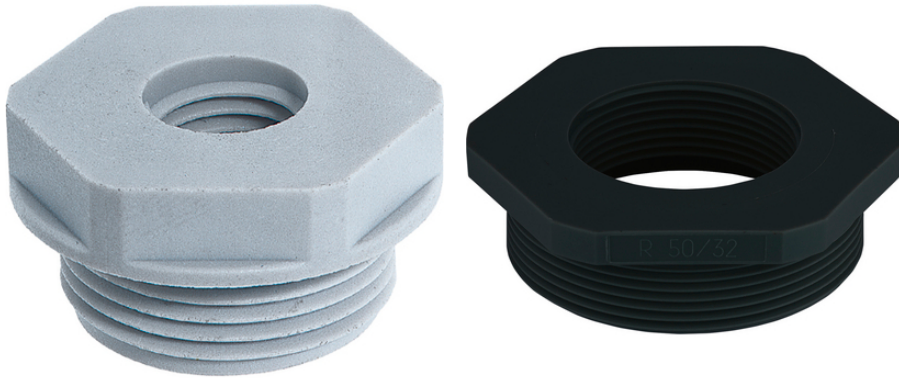


## SKINDICHT® KU-M

SKINDICHT® KU-M, polyamide, glass fibre-reinforced reducers for maximum mechanical stability, with metric connection thread



Assembly time



Space requirement



Connector with standard housing unit

### Benefits

Enables the use of cable glands with smaller connection threads than the existing threaded holes

### Application range

Machines  
Devices  
Housings

### Product Make-up

Metric connection thread acc. to DIN EN 60423  
Basis for technical information DIN IEC 62444

### Technical Data

Classification ETIM 5:

ETIM 5.0 Class-ID: EC000441

ETIM 5.0 Class-Description: Cable screw gland

Classification ETIM 6:

ETIM 6.0 Class-ID: EC000441

ETIM 6.0 Class-Description: Cable screw gland

Colour delivered:

Light grey (RAL 7035)

Black (RAL 9005), UV-resistant

Material:

Polyamide, glass fibre-reinforced

Temperature range:

-40°C to +100°C

Last Update (17.12.2024)

©2024 Lapp Group - Technical changes reserved

Product Management [www.lappkabel.de](http://www.lappkabel.de)

You can find the current technical data in the corresponding data sheet.

PN 0456 / 02\_03.16

## SKINDICHT® KU-M

### Note

Photographs and graphics are not to scale and do not represent detailed images of the respective products.  
Prices are net prices without VAT and surcharges. Sale to business customers only.



## SKINDICHT® KU-M

Article number	Thread, male M1	Thread, female M2	SW wrench size mm	Thread length D mm	Pieces / PU
SKINDICHT® KU-M black					
52104541	16 x 1.5	12 x 1.5	20	8	100
52104520	20 x 1.5	12 x 1.5	24	8	100
52104521	20 x 1.5	16 x 1.5	24	9	100
52104522	25 x 1.5	12 x 1.5	29	8	100
52104523	25 x 1.5	16 x 1.5	29	8	100
52104524	25 x 1.5	20 x 1.5	30	10	100
52104526	32 x 1.5	16 x 1.5	36	10	50
52104527	32 x 1.5	20 x 1.5	36	10	50
52104528	32 x 1.5	25 x 1.5	36	11	50
52104529	40 x 1.5	16 x 1.5	46	10	50
52104530	40 x 1.5	20 x 1.5	46	10	50
52104531	40 x 1.5	25 x 1.5	46	10	25
52104532	40 x 1.5	32 x 1.5	44	12	25
52104534	50 x 1.5	25 x 1.5	55	12	5
52104535	50 x 1.5	32 x 1.5	55	12	5
52104536	50 x 1.5	40 x 1.5	55	13	5
52104537	63 x 1.5	25 x 1.5	68	12	5
52104538	63 x 1.5	32 x 1.5	68	12	5
52104539	63 x 1.5	40 x 1.5	68	12	5
52104540	63 x 1.5	50 x 1.5	70	15	5
SKINDICHT® KU-M light grey					
52104505	16 x 1.5	12 x 1.5	22	9	100
52104470	20 x 1.5	12 x 1.5	24	9	100
52104504	20 x 1.5	16 x 1.5	24	9	100
52104472	25 x 1.5	12 x 1.5	29	10	100
52104473	25 x 1.5	16 x 1.5	29	10	100
52104474	25 x 1.5	20 x 1.5	29	10	100
52104475	32 x 1.5	12 x 1.5	36	12	50
52104476	32 x 1.5	16 x 1.5	36	12	50
52104477	32 x 1.5	20 x 1.5	36	12	50
52104478	32 x 1.5	25 x 1.5	36	12	50
52104479	40 x 1.5	16 x 1.5	46	12	50
52104480	40 x 1.5	20 x 1.5	46	12	50
52104481	40 x 1.5	25 x 1.5	46	12	25

Last Update (17.12.2024)

©2024 Lapp Group - Technical changes reserved

Product Management [www.lappkabel.de](http://www.lappkabel.de)You can find the current technical data in the corresponding data sheet.  
PN 0456 / 02\_03\_16



**SKINDICHT® KU-M**

Article number	Thread, male M1	Thread, female M2	SW wrench size mm	Thread length D mm	Pieces / PU
52104482	40 x 1.5	32 x 1.5	46	12	25
52104483	50 x 1.5	20 x 1.5	55	14	5
52104484	50 x 1.5	25 x 1.5	55	14	5
52104485	50 x 1.5	32 x 1.5	55	14	5
52104486	50 x 1.5	40 x 1.5	55	14	5
52104487	63 x 1.5	25 x 1.5	68	15	5
52104488	63 x 1.5	32 x 1.5	68	15	5
52104489	63 x 1.5	40 x 1.5	68	15	5
52104469	63 x 1.5	50 x 1.5	68	15	5

Last Update (17.12.2024)

©2024 Lapp Group - Technical changes reserved

Product Management [www.lappkabel.de](http://www.lappkabel.de)

You can find the current technical data in the corresponding data sheet.

PN 0456 / 02\_03\_16