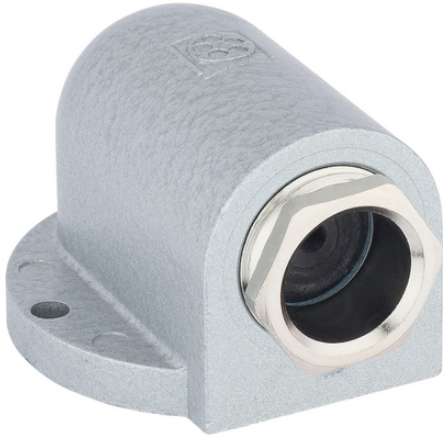


SKINDICHT® SE-M

SKINDICHT® SE-M, angular cable outlet, incised sealing ring as a seal, for missing connection thread and high mechanical load



Corrosion-resistant



Mechanical resistance



Space requirement



Connector with standard housing unit



Temperature-resistant

Benefits

Sealed by incised sealing ring
Corrosion-resistant
Easy to install
Completely safe cable entry
Low overall height

Application range

For high mechanical stress
When no connection thread is provided

Product Make-up

M20 x 1.5 - M25 x 1.5 with 2 screw holes
M32 x 1.5 with 4 screw holes
With incised sealing ring

Last Update (10.12.2022)

©2022 Lapp Group - Technical changes reserved

Product Management www.lappkabel.de

You can find the current technical data in the corresponding data sheet.

PN 0456 / 02_03.16

SKINDICHT® SE-M

Technical Data

Classification ETIM 5:	ETIM 5.0 Class-ID: EC000441 ETIM 5.0 Class-Description: Cable screw gland
Classification ETIM 6:	ETIM 6.0 Class-ID: EC000441 ETIM 6.0 Class-Description: Cable screw gland
Material:	Body: zinc die-casting, grey, hammer tone finish Compression screw: nickel-plated brass Incised sealing ring: CR/NBR O-ring: NBR
Protection rating:	IP 55
Temperature range:	-20°C to +80°C

Note

Photographs and graphics are not to scale and do not represent detailed images of the respective products.
Prices are net prices without VAT and surcharges. Sale to business customers only.

SKINDICHT® SE-M

Article number	Article designation / size	Incised sealing ring ØF (mm)	Overall height (mm)	SW wrench size mm	Overall length C mm	Overall width (mm)	Pieces / PU
SKINDICHT® SE-M							
52108000	M 20 x 1,5	4/7/10/13	31	20	49.2	42.0	10
52108010	M 25 x 1,5	8.5/11.5/14.5/17.5	40	25	68.2	60.0	5
52108020	M 32 x 1,5	16/19/22/25	51.5	32	84.2	66.0	1

Last Update (10.12.2022)

©2022 Lapp Group - Technical changes reserved

Product Management www.lappkabel.de

You can find the current technical data in the corresponding data sheet.

PN 0456 / 02_03_16