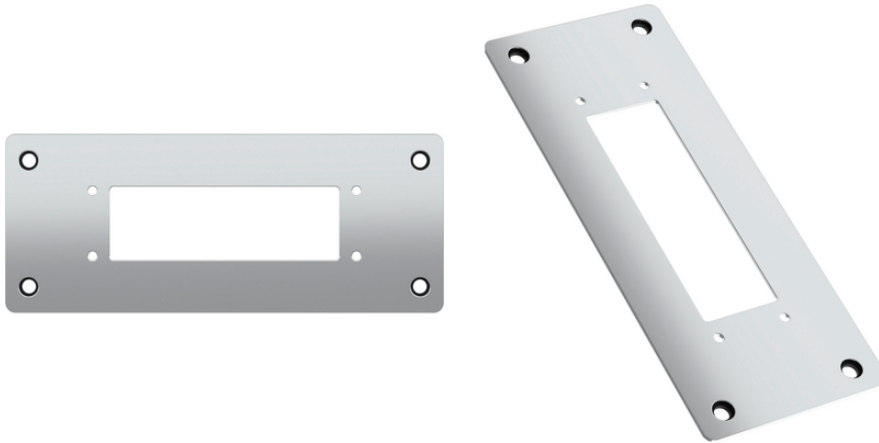


## SKINTOP® MULTI Flange FL21

SKINTOP® MULTI Flansch FL21, flange plate



Mechanical and plant engineering



Suitable for outdoor use



Good chemical resistance



Mechanical resistance



Robust



Reliability

### Benefits

Reduces the rectangular, standard FL21 mounting cut-out and allows flexibility when selecting the multi-cable entry system.

Versatile use in various applications and environments.

Pre-assembled NBR seal enables reliable sealing to the housing (protection class IP 66).

Easy assembly with 4 fastening screws.

Stable construction made of powder-coated steel sheet or V2A stainless steel.

### Application range

For cable entry into a housing with Scandinavian FL21 mounting cut-out, while simultaneously using the SKINTOP® MULTI or SKINTOP® CUBE multi-cable entry systems.

Can be used in dry, humid and oily environments.

Suitable for outdoor use.

### Technical Data

Last Update (11.12.2022)

©2022 Lapp Group - Technical changes reserved

Product Management [www.lappkabel.de](http://www.lappkabel.de)

You can find the current technical data in the corresponding data sheet.

PN 0456 / 02\_03.16

## SKINTOP® MULTI Flange FL21

Material:	Steel plate, powder-coated Stainless steel Sealing: NBR
Protection rating:	IP 66
Temperature range:	-10 °C to +70 °C

### Note

Photographs and graphics are not to scale and do not represent detailed images of the respective products. Prices are net prices without VAT and surcharges. Sale to business customers only.

**SKINTOP® MULTI Flange FL21**

Article number	Article designation / size	Cut-out W x H	Pieces / PU
52220030	Steel plate, powder-coated, RAL 7035	113.0 x 36.0	1
52220031	Stainless steel, V2A	113.0 x 36.0	1

Last Update (11.12.2022)

©2022 Lapp Group - Technical changes reserved

Product Management [www.lappkabel.de](http://www.lappkabel.de)

You can find the current technical data in the corresponding data sheet.

PN 0456 / 02\_03\_16