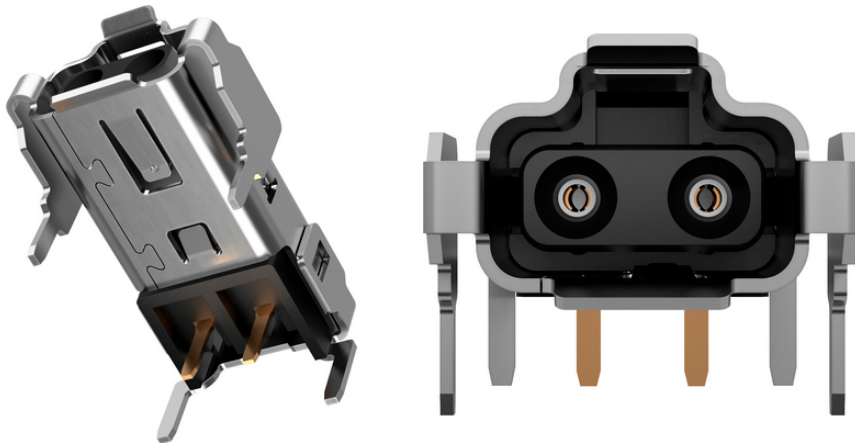


## EPIC® DATA SPE Connectors

The compact Single Pair Ethernet circuit board socket is used to connect SPE connectors to a PCB. In addition to the data supply, the socket also enables a power supply of up to 50 watts for terminal devices thanks to the Power over Data Line. The connector face complies with the DIN EN IEC 63171-6 standard.

### Info

With solder pins for PCB boards



Supplementary automation components from Lapp



Mechanical and plant engineering

### Benefits

Fast information exchange thanks to future-proof Single Pair Ethernet (SPE) technology for a consistent and uniform network infrastructure right up to the field level.

Compact design for use in restricted spaces.

Connector face of the SPE connector in accordance with DIN EN IEC 63171-6.

Power-over-Data-Line (PoDL)-capable line according to IEEE 802.3bu for simultaneous power and data supply of SPE terminals with low power requirements (up to 50 W).

### Application range

For connecting SPE connectors to a PCB inside active devices.

For use with the SPE connector EPIC® DATA SPE-6 FA M CS1.

For use with the SPE patch cable EPIC® DATA SPE-6 PC M-M CT001.

### Norm references / Approvals

DIN EN IEC 63171-6

### Technical Data

Protection rating:

IP 20

### Note

Photographs and graphics are not to scale and do not represent detailed images of the respective products.

Prices are net prices without VAT and surcharges. Sale to business customers only.

Last Update (29.06.2025)

©2025 Lapp Group - Technical changes reserved

Product Management [www.lappkabel.de](http://www.lappkabel.de)

You can find the current technical data in the corresponding data sheet.

PN 0456 / 02\_03.16



## EPIC® DATA SPE Connectors

Article number
21700866

Last Update (29.06.2025)

©2025 Lapp Group - Technical changes reserved

Product Management [www.lappkabel.de](http://www.lappkabel.de)

You can find the current technical data in the corresponding data sheet.

PN 0456 / 02\_03.16