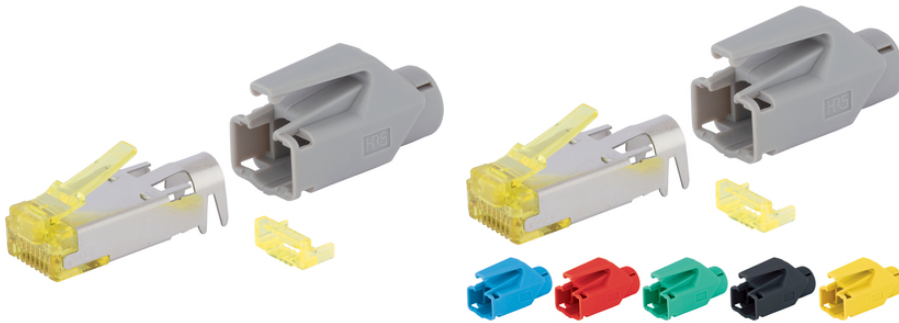


## Connector RJ45 Cat.6A Hirose TM31

Connector RJ45 Cat.6<sub>A</sub>, Class E<sub>A</sub> bis 500 MHz

RJ45 field mountable connector, qualified for Channel Class E bis 500MHz (Cat.6A) suitable for industrial environment and Officearea  
Hirose TM31



### Application range

Connector RJ45 CAT.6<sub>A</sub> Hirose TM31  
For data transfer rates up to 500 MHz

### Product features

Easy to handle

### Norm references / Approvals

Cat.6<sub>A</sub> acc. to ISO/IEC 11801

### Product Make-up

Connector (inkl. Antikink & Guide Plate)  
Suitable for braided conductors: AWG24/7, AWG26/7, AWG27/7  
Fully screened

### Technical Data

Classification ETIM 5:

ETIM 5.0 Class-ID: EC002641

ETIM 5.0 Class-Description: Modular connector (industrial connector)

Protection rating:

IP 20

Ambient temperature (operation):

-25°C .. +60°C

### Note

Photographs and graphics are not to scale and do not represent detailed images of the respective products.  
Prices are net prices without VAT and surcharges. Sale to business customers only.

**Connector RJ45 Cat.6A Hirose TM31**

Article number	Article designation	Max. outer diameter (mm)	Max. core diameter including insulation	AWG 7-wire
24441256	RJ45 connector TM31 Hirose Cat.6A GY	6	1	27-24
24441258	RJ45 Connector TM31 Hirose Cat.6A BK	6	1	27-24
24441259	RJ45 connector TM31 Hirose Cat.6A RD	6	1	27-24
24441260	RJ45 connector TM31 Hirose Cat.6A GN	6	1	27-24
24441261	RJ45 connector TM31 Hirose Cat.6A BU	6	1	27-24
24441262	RJ45 connector TM31 Hirose Cat.6A YE	6	1	27-24

Last Update (04.10.2020)

©2020 Lapp Group - Technical changes reserved

Product Management [www.lappkabel.de](http://www.lappkabel.de)You can find the current technical data in the corresponding data sheet.  
PN 0456 / 02\_03.16