

## EPIC® POWER LS1 A3

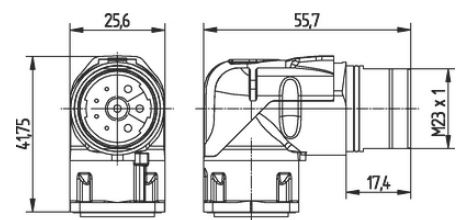
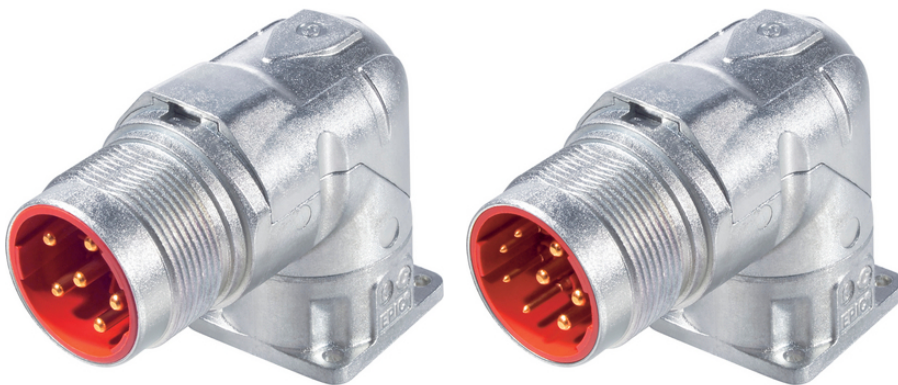
Circular connectors for servomotors and power supply

EPIC® LS1 for male contacts angled, swivel

### Info

Rotateable with clearly defined adjustment positions

Made in Germany



Mechanical and plant engineering



Wind Energy



Good chemical resistance



Corrosion-resistant



Maximum vibration protection



Mechanical resistance



Assembly time



Space requirement



Robust

Last Update (15.05.2025)

©2025 Lapp Group - Technical changes reserved

Product Management [www.lappkabel.de](http://www.lappkabel.de)

You can find the current technical data in the corresponding data sheet.

PN 0456 / 02\_03.16

## EPIC® POWER LS1 A3



Interference signals



Waterproof



Variety of approval certifications

### Benefits

High power at smallest installation space, Optimal solution for electric motors

EMC-optimised design

Safety use in field environment by high protection class

### Application range

Plant engineering

Servo drives and servo assemblies

### Technical Data

Classification ETIM 5:	ETIM 5.0 Class-ID: EC002635 ETIM 5.0 Class-Description: Circular connector (industrial connector)
Classification ETIM 6:	ETIM 6.0 Class-ID: EC002635 ETIM 6.0 Class-Description: Circular connector (industrial connector)
Rated voltage (V):	630 V (2 mm contacts) 250 V (1 mm contacts)
Rated impulse voltage:	6 kV (2 mm contacts) 4 kV (1 mm contacts)
Rated current (A):	26A/3+PE+4, 25A/5+PE (2mm contacts) 7 A (1 mm contacts)
Pollution degree:	3
Contact resistance:	< 4 mOhm
Contacts:	Gold-plated brass
Number of contacts:	3+PE+4(2mm/1mm) 5+PE(2mm)
Termination methods:	Crimp termination: 0.5 - 2.5 mm <sup>2</sup> (2 mm contacts) Crimp termination: 0.14 - 1.0 mm <sup>2</sup> (1 mm contacts)
Material:	Housing: nickel-plated zinc die-casting, nickel-plated brass Insert: PA, Seal: FPM
Protection rating:	IP 65
Cycle of mechanical operation:	500
VDE-tested:	UL File Number: E249137
Temperature range:	-25°C up to +125°C

### Note

Last Update (15.05.2025)

©2025 Lapp Group - Technical changes reserved

Product Management [www.lappkabel.de](http://www.lappkabel.de)

You can find the current technical data in the corresponding data sheet.

PN 0456 / 02\_03.16

**EPIC® POWER LS1 A3**

Photographs and graphics are not to scale and do not represent detailed images of the respective products.  
Prices are net prices without VAT and surcharges. Sale to business customers only.

**EPIC® POWER LS1 A3**

Article number	Article description	Contacts included	Clamping range in mm	Fastening type	Pin configuration	Packaging unit
Type LS1 A3, angled, rotatable, 6-pin, for male contacts						
24420058	LS1 A3	6	-	Ø 2.7 mm (4x)	5+PE	5
24420059	LS1 A3	-	-	Ø 2.7 mm (4x)	5+PE	20
Type LS1 A3, angled, rotatable, 8-pin, for male contacts						
24420056	LS1 A3	8	-	Ø 2.7 mm (4x)	3+PE+4	5
24420057	LS1 A3	-	-	Ø 2.7 mm (4x)	3+PE+4	20

Last Update (15.05.2025)

©2025 Lapp Group - Technical changes reserved

Product Management [www.lappkabel.de](http://www.lappkabel.de)You can find the current technical data in the corresponding data sheet.  
PN 0456 / 02\_03.16