

EPIC® POWER LS1 F7

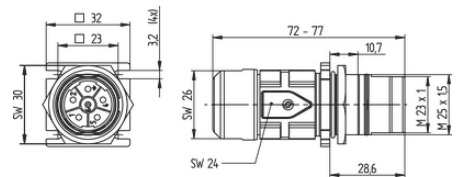
Circular connectors for servomotors and power supply

EPIC® LS1 Power cable coupler with flange for cable extensions for wall mounting

Info

For fast and safe wall mounting of a cable extension

Made in Germany



Mechanical and plant engineering



Wind Energy



Good chemical resistance



Corrosion-resistant



Maximum vibration protection



Mechanical resistance



Assembly time



Optimum strain relief



Space requirement

Last Update (16.07.2025)

©2025 Lapp Group - Technical changes reserved

Product Management www.lappkabel.de

You can find the current technical data in the corresponding data sheet.

PN 0456 / 02_03.16

EPIC® POWER LS1 F7



Robust



Integrated SKINTOP[®] cable gland



Interference signals



Waterproof



Variety of approval certifications

Benefits

High power at smallest installation space, Optimal solution for electric motors

EMC-optimised design

Safety use in field environment by high protection class

Application range

Plant engineering

Servo drives and servo assemblies

Technical Data

Classification ETIM 5:

ETIM 5.0 Class-ID: EC002635

ETIM 5.0 Class-Description: Circular connector (industrial connector)

Classification ETIM 6:

ETIM 6.0 Class-ID: EC002635

ETIM 6.0 Class-Description: Circular connector (industrial connector)

Rated voltage (V):

630 V (2 mm contacts)

250 V (1 mm contacts)

Rated impulse voltage:

6 kV (2 mm contacts)

4 kV (1 mm contacts)

Rated current (A):

26A/3+PE+4, 25A/5+PE (2mm contacts)

7 A (1 mm contacts)

Pollution degree:

3

Contact resistance:

< 4 mOhm

Contacts:

Gold-plated brass

Number of contacts:

3+PE+4(2mm/1mm)

5+PE(2mm)

Termination methods:

Crimp termination: 0.5 - 4.0 mm² (2 mm contacts)

Crimp termination: 0.14 - 1.0 mm² (1 mm contacts)

Material:

Housing: nickel-plated zinc die-casting, nickel-plated brass

Insert: PA,

Seal: FPM

Protection rating:

IP68 (10h/1m)

Cycle of mechanical operation:

500

Last Update (16.07.2025)

©2025 Lapp Group - Technical changes reserved

Product Management www.lappkabel.de

You can find the current technical data in the corresponding data sheet.

PN 0456 / 02_03.16

EPIC® POWER LS1 F7

VDE-tested:

UL File Number: E249137

Temperature range:

-25°C up to +125°C

Note

Photographs and graphics are not to scale and do not represent detailed images of the respective products.
Prices are net prices without VAT and surcharges. Sale to business customers only.

EPIC® POWER LS1 F7

| Article number | Article description | Contacts included | Clamping range in mm | Fastening type | Pin configuration | Packaging unit |
|---|---------------------|-------------------|----------------------|--|-------------------|----------------|
| Type LS1 F7, cable coupler with mounting flange, 6-pin, for male contacts | | | | | | |
| 73000020 | LS1 F7 | 6 | 8.5 - 11 | Ø 3.2 mm (4x), M25 x 1.5 (with nut) | 5+PE | 5 |
| 73000021 | LS1 F7 | 6 | 10.5 - 15.5 | Ø 3.2 mm (4x), M25 x 1.5 (with nut) | 5+PE | 5 |
| 76143000 | LS1 F7 | 6 | 7.5 - 15.5 | Ø 3.2 mm (4x), M25 x 1.5 (with nut) | 5+PE | 5 |
| Type LS1 F7, 8-pin, for male contacts | | | | | | |
| 73000016 | LS1 F7 | 8 | 8.5 - 11 | Ø 3.2 mm (4x), M25 x 1.5 (with nut) | 3+PE+4 | 5 |
| 73000017 | LS1 F7 | 8 | 10.5 - 15.5 | Ø 3.2 mm (4x), M25 x 1.5 (with nut) | 3+PE+4 | 5 |

Last Update (16.07.2025)

©2025 Lapp Group - Technical changes reserved

Product Management www.lappkabel.de

You can find the current technical data in the corresponding data sheet.

PN 0456 / 02_03.16