

## EPIC® POWER LS3 female contacts

Contacts, tools, accessories for circular connectors

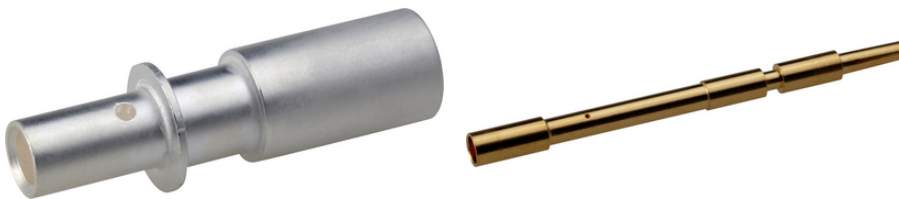
EPIC® POWER LS3 female contacts for size 3 circular connector series

### Info

Only available as crimp version due to the high mechanical stress in servo applications

Power contacts silver plated, signal contacts gold plated

Made in Germany



Mechanical resistance



Optimum strain relief



Reliability

### Technical Data

Classification ETIM 5:

ETIM 5.0 Class-ID: EC000796

ETIM 5.0 Class-Description: Contact for industrial connectors

Classification ETIM 6:

ETIM 6.0 Class-ID: EC000796

ETIM 6.0 Class-Description: Contact for industrial connectors

### Note

Photographs and graphics are not to scale and do not represent detailed images of the respective products.

Prices are net prices without VAT and surcharges. Sale to business customers only.

**EPIC® POWER LS3 female contacts**

Article number	Article designation	Version	For design	Pieces / PU
EPIC® POWER LS3 female contacts				
44429354	LS3 D BCEM 10MM AG 10	10 mm female 10 mm <sup>2</sup>	for type D6	4
44429355	LS3 D BCEM 10MM AG 16	10 mm female 16 mm <sup>2</sup>	for type D6	4
44429356	LS3 D BCEM 10MM AG 25	10 mm female 25 mm <sup>2</sup>	for type D6	4
44429357	LS3 D BCEM 10MM AG 35	10 mm female 50 mm <sup>2</sup>	for type D6	4
44429358	LS3 D BCEM 10MM AG 50	10 mm female 35 mm <sup>2</sup>	for type D6	4
44429359	LS3 D BCEM 1.6MM AU 0.75-1.5	1.6 mm female 0.75 - 1.5 mm <sup>2</sup>	for type D6	4

Last Update (22.02.2024)

©2024 Lapp Group - Technical changes reserved

Product Management [www.lappkabel.de](http://www.lappkabel.de)

You can find the current technical data in the corresponding data sheet.

PN 0456 / 02\_03.16