

## EPIC® SIGNAL M23 A1

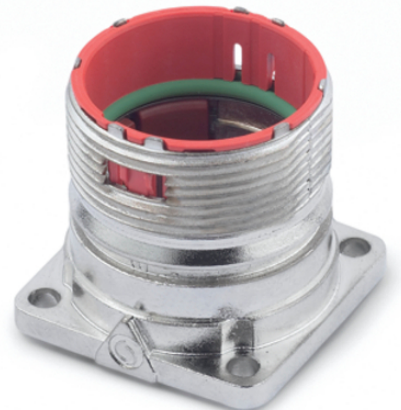
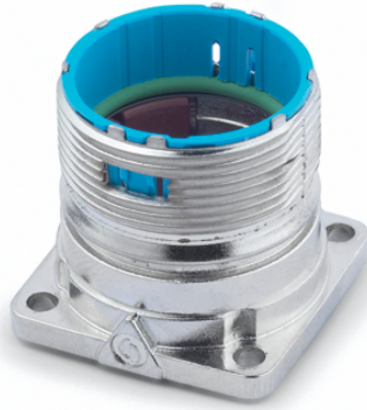
Circular connectors for Servo Cables and encoders

EPIC®M23 panel base for front wall assembly

### Info

Colour coding for easy connecting

Made in Germany



Mechanical and plant engineering



Wind Energy



Good chemical resistance



Robust



Interference signals



Waterproof



Variety of approval certifications

### Benefits

Safe fixing with 4 screws

Permanent vibration protection

Last Update (27.05.2023)

©2023 Lapp Group - Technical changes reserved

Product Management [www.lappkabel.de](http://www.lappkabel.de)

You can find the current technical data in the corresponding data sheet.

PN 0456 / 02\_03.16

## EPIC® SIGNAL M23 A1

### Application range

Plant engineering  
Servo drives and servo assemblies  
Measurement and control technology

### Product features

Mounting: Ø2.7mm for screws M2.5. Ø3.2mm for screws M3

### Technical Data

Classification ETIM 5:	ETIM 5.0 Class-ID: EC000437 ETIM 5.0 Class-Description: Housing for industrial connectors
Classification ETIM 6:	ETIM 6.0 Class-ID: EC000437 ETIM 6.0 Class-Description: Housing for industrial connectors
Material:	Housing: nickel-plated zinc die-casting Sealing: FPM
Protection rating:	IP68 (10h/1m)
VDE-tested:	Certified production control: VDE-REG. no. C24 (according to EN 61984, SELV according to DIN VDE 0100-410 has to be guaranteed) UL File Number: E249137
Temperature range:	-25°C up to +125°C

### Note

Photographs and graphics are not to scale and do not represent detailed images of the respective products.  
Prices are net prices without VAT and surcharges. Sale to business customers only.

**EPIC® SIGNAL M23 A1**

Article number	Article	Coding	Fastening type	Pieces / PU
Type M23 A1 panel-mount box, front wall mounting				
72004000	M23 A1	black (N)	Ø 2.7 mm (4x)	5
72004010	M23 A1	black (N)	Ø 2.7 mm (4x)	20
72004200	M23 A1	red (+20°)	Ø 2.7 mm (4x)	5
72004210	M23 A1	red (+20°)	Ø 2.7 mm (4x)	20
72004100	M23 A1	blue (-20°)	Ø 2.7 mm (4x)	5
72004110	M23 A1	blue (-20°)	Ø 2.7 mm (4x)	20

Last Update (27.05.2023)

©2023 Lapp Group - Technical changes reserved

Product Management [www.lappkabel.de](http://www.lappkabel.de)You can find the current technical data in the corresponding data sheet.  
PN 0456 / 02\_03\_16

**EPIC® SIGNAL M23 A1**