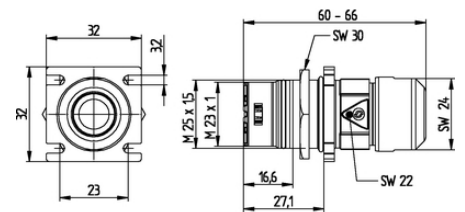
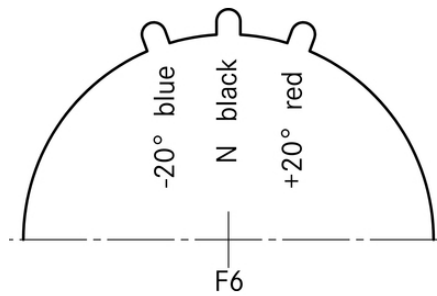


## EPIC® SIGNAL M23 F7

Circular connectors for Servo Cables and encoders

EPIC® M23 cable coupler with flange



Interference signals



Integrated SKINTOP<sup>®</sup> cable gland



Robust



Optimum strain relief



Good chemical resistance



Wind Energy



Mechanical and plant engineering

### Benefits

Low-resistance screen contact, optimum EMC protection

Use of high quality materials for increased reliability

### Application range

Plant engineering

Servo drives and servo assemblies

Measurement and control technology

Last Update (10.12.2022)

©2022 Lapp Group - Technical changes reserved

Product Management [www.lappkabel.de](http://www.lappkabel.de)

You can find the current technical data in the corresponding data sheet.

PN 0456 / 02\_03.16

## EPIC® SIGNAL M23 F7

### Technical Data

Classification ETIM 5:	ETIM 5.0 Class-ID: EC000437 ETIM 5.0 Class-Description: Housing for industrial connectors
Classification ETIM 6:	ETIM 6.0 Class-ID: EC000437 ETIM 6.0 Class-Description: Housing for industrial connectors
Material:	Housing: nickel-plated zinc die-casting Sealing: FPM
Protection rating:	IP68 (10h/1m)
VDE-tested:	Certified production control: VDE-REG. no. C24 (according to EN 61984, SELV according to DIN VDE 0100-410 has to be guaranteed) UL File Number: E249137
Temperature range:	-25 °C up to +125 °C

### Note

Photographs and graphics are not to scale and do not represent detailed images of the respective products. Prices are net prices without VAT and surcharges. Sale to business customers only.

**EPIC® SIGNAL M23 F7**

Article number	Article	Coding	Cable clamping range	Fastening type
Type M23 F7 panel-mount connector, front/rear wall mounting				
44420009	M23 F7	black (N)	7 - 10	Ø 3.2 mm (4x), M25 x 1.5 (with nut)
44420010	M23 F7	black (N)	7 - 10	Ø 3.2 mm (4x), M25 x 1.5 (with nut)
44420011	M23 F7	black (N)	9.5 - 13.5	Ø 3.2 mm (4x), M25 x 1.5 (with nut)
44420012	M23 F7	black (N)	9.5 - 13.5	Ø 3.2 mm (4x), M25 x 1.5 (with nut)
44420001	M23 F7	red (+20°)	7 - 10	Ø 3.2 mm (4x), M25 x 1.5 (with nut)
44420002	M23 F7	red (+20°)	7 - 10	Ø 3.2 mm (4x), M25 x 1.5 (with nut)
44420003	M23 F7	red (+20°)	9.5 - 13.5	Ø 3.2 mm (4x), M25 x 1.5 (with nut)
44420004	M23 F7	red (+20°)	9.5 - 13.5	Ø 3.2 mm (4x), M25 x 1.5 (with nut)
44420005	M23 F7	blue (-20°)	7 - 10	Ø 3.2 mm (4x), M25 x 1.5 (with nut)
44420006	M23 F7	blue (-20°)	7 - 10	Ø 3.2 mm (4x), M25 x 1.5 (with nut)
44420007	M23 F7	blue (-20°)	9.5 - 13.5	Ø 3.2 mm (4x), M25 x 1.5 (with nut)
44420008	M23 F7	blue (-20°)	9.5 - 13.5	Ø 3.2 mm (4x), M25 x 1.5 (with nut)

Last Update (10.12.2022)

©2022 Lapp Group - Technical changes reserved

Product Management [www.lappkabel.de](http://www.lappkabel.de)You can find the current technical data in the corresponding data sheet.  
PN 0456 / 02\_03\_16