

## EPIC® SIGNAL M23 G4

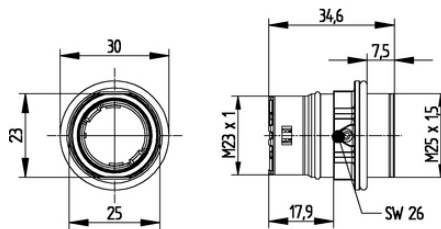
Circular connectors for Servo Cables and encoders

EPIC® M23 panel base for screw in with M25 thread

### Info

For mounting in existing M25 threads or boreholes

Made in Germany



Mechanical and plant engineering



Wind Energy



Good chemical resistance



Robust



Interference signals

### Benefits

Fast and easy assembly

Only one M25 bore hole necessary

### Application range

Plant engineering

Servo drives and servo assemblies

Measurement and control technology

### Technical Data

Last Update (01.09.2020)

©2020 Lapp Group - Technical changes reserved

Product Management [www.lappkabel.de](http://www.lappkabel.de)

You can find the current technical data in the corresponding data sheet.

PN 0456 / 02\_03.16

## EPIC® SIGNAL M23 G4

Classification ETIM 5:	ETIM 5.0 Class-ID: EC000437 ETIM 5.0 Class-Description: Housing for industrial connectors
Classification ETIM 6:	ETIM 6.0 Class-ID: EC000437 ETIM 6.0 Class-Description: Housing for industrial connectors
Material:	Housing: nickel-plated zinc die-casting Sealing: FPM
Protection rating:	IP68 (10h/1m)
VDE-tested:	Certified production control: VDE-REG. no. C24 (according to EN 61984, SELV according to DIN VDE 0100-410 has to be guaranteed) UL File Number: E249137
Temperature range:	-25°C up to +125°C

### Note

Photographs and graphics are not to scale and do not represent detailed images of the respective products.  
Prices are net prices without VAT and surcharges. Sale to business customers only.

**EPIC® SIGNAL M23 G4**

Article number	Article	Coding	Fastening type	Pieces / PU
Type M23 G4 panel-mount box, front wall mounting				
44420032	M23 G4	black (N)	M25 x 1.5	5
44420031	M23 G4	black (N)	M25 x 1.5	20
44420034	M23 G4	red (+20°)	M25 x 1.5	5
44420033	M23 G4	red (+20°)	M25 x 1.5	20
44420030	M23 G4	blue (-20°)	M25 x 1.5	5

Last Update (01.09.2020)

©2020 Lapp Group - Technical changes reserved

Product Management [www.lappkabel.de](http://www.lappkabel.de)You can find the current technical data in the corresponding data sheet.  
PN 0456 / 02\_03.16