

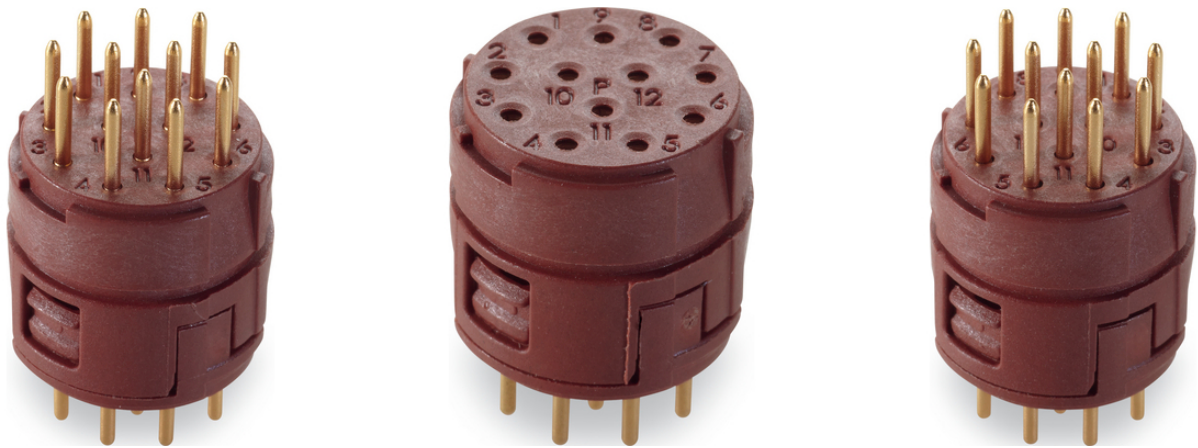
EPIC® SIGNAL M23 Inserts 12 pole PCB-soldering

Inserts for M23 circular connectors

EPIC® Einsätze 12-way for Printed circuit boards for M23 circular connector series

Info

With solder pins for PCB boards
Only for housing type A1, B1, B2
Made in Germany



Mechanical and plant engineering



Wind Energy



Good chemical resistance



Mechanical resistance



Assembly time



Robust



Variety of approval certifications

Benefits

Inserts with solder pins at the connection side for soldering in PCB boards. Ideal in combination with M23 housings of type B1/B2 for rear wall-mounting.

Last Update (06.06.2023)

©2023 Lapp Group - Technical changes reserved

Product Management www.lappkabel.de

You can find the current technical data in the corresponding data sheet.

PN 0456 / 02_03.16

EPIC® SIGNAL M23 Inserts 12 pole PCB-soldering

Application range

Plant engineering
Measurement and control technology
Apparatus construction

Technical Data

Classification ETIM 5:	ETIM 5.0 Class-ID: EC000438 ETIM 5.0 Class-Description: Contact insert for industrial connectors
Classification ETIM 6:	ETIM 6.0 Class-ID: EC000438 ETIM 6.0 Class-Description: Contact insert for industrial connectors
Rated voltage (V):	according to IEC 61984: 100 V
Rated impulse voltage:	1.5 kV
Rated current (A):	7 A
Pollution degree:	3
Contact resistance:	< 4 mOhm
Contacts:	Gold-plated brass
Number of contacts:	12 12*1mm PCB-solder contacts
Termination methods:	Solder pins with Ø 1.0 mm for PCB soldering. Pin length from rear edge of housing B1/B2: 4 mm
Cycle of mechanical operation:	100
Temperature range:	-25°C up to +125°C

Note

The inserts are suitable for both male and female contacts. For a complete connection, you will need one P-component and one E-component. P-component = left turning (anticlockwise), E-component = right turning (clockwise)
Photographs and graphics are not to scale and do not represent detailed images of the respective products.
Prices are net prices without VAT and surcharges. Sale to business customers only.

EPIC® SIGNAL M23 Inserts 12 pole PCB-soldering

Article number	Article description	Inserts	Contacts included	Pin configuration	Pieces / PU
12-pin inserts, P-part = rotation to the left (plug side anticlockwise)					
44420107	P-part	+ male contacts, PCB solder	12	12	5
44420108	P-part	+ female contacts, PCB solder	12	12	5
12-pin inserts, E-part = rotation to the right (plug side clockwise)					
44420066	E-Part	+ male contacts, PCB solder	12	12	5
44420106	E-Part	+ female contacts, PCB solder	12	12	5

Last Update (06.06.2023)

©2023 Lapp Group - Technical changes reserved

Product Management www.lappkabel.deYou can find the current technical data in the corresponding data sheet.
PN 0456 / 02_03_16

EPIC® SIGNAL M23 Inserts 12 pole PCB-soldering

