

EPIC® H-A 10 SDR-LB

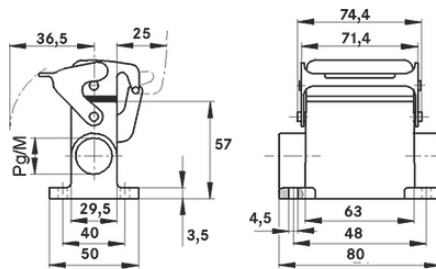
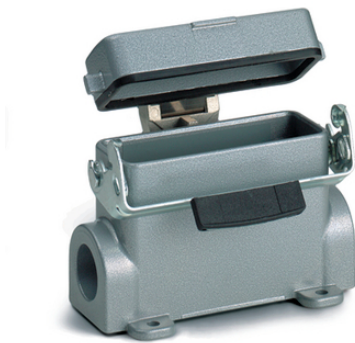
These connectors are attractive because of their compact housing.

The robust metal housing for rectangular connectors has a single lever and a cable entry and can be used in control systems.

Info

Metal lid with sturdy hinge

Protection rating UL50E tested



Mechanical and plant engineering



Mechanical resistance



Robust



Waterproof

Benefits

Small and space-saving for narrow available space

Application range

Machine and equipment manufacturing

Control engineering

Electronic laboratory

Product features

Surface-mount base

Single lever

1 cable entry

Metal cover

Last Update (15.07.2024)

©2024 Lapp Group - Technical changes reserved

Product Management www.lappkabel.de

You can find the current technical data in the corresponding data sheet.

PN 0456 / 02_03.16

EPIC® H-A 10 SDR-LB

Technical Data

Classification ETIM 5:	ETIM 5.0 Class-ID: EC000437 ETIM 5.0 Class-Description: Housing for industrial connectors
Classification ETIM 6:	ETIM 6.0 Class-ID: EC000437 ETIM 6.0 Class-Description: Housing for industrial connectors
Material:	Housing: aluminium alloy, grey Lever: zinc-plated steel Sealing: NBR
Protection rating:	IP 65 (latched) NEMA 250, UL50E: 12, 4 (latched)
VDE-tested:	Certified production control: VDE-REG. no.: B437 UL-tested: UL File Number: E75770
Temperature range:	-40°C to +100°C, short-term up to +125°C

Note

Photographs and graphics are not to scale and do not represent detailed images of the respective products. Prices are net prices without VAT and surcharges. Sale to business customers only.



EPIC® H-A 10 SDR-LB

Article number	Article description	M	PG	Packaging unit
H-A housing: surface-mount base (cover, 1 cable entry, single lever)				
70455200	H-A 10 SDR-LB 16	-	16	5
70455400	H-A 10 SDR-LB 21	-	21	5
79455200	H-A 10 SDR-LB M20	20	-	5
79455400	H-A 10 SDR-LB M25	25	-	5

Last Update (15.07.2024)

©2024 Lapp Group - Technical changes reserved

Product Management www.lappkabel.de

You can find the current technical data in the corresponding data sheet.

PN 0456 / 02_03_16