

## EPIC® H-A 16 SGRL-LB

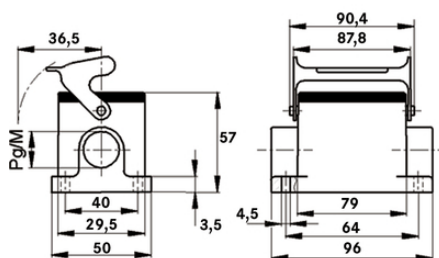
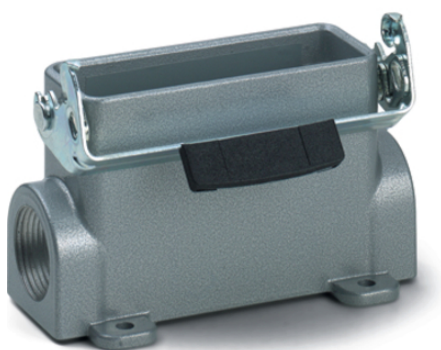
These connectors are attractive because of their compact housing.

The base metal housing consists of a single lever and two cable entries. It can be used, for example, in control systems.

### Info

For easy introduction of two cables

Protection rating UL50E tested



Waterproof



Robust



Mechanical resistance



Mechanical and plant engineering

### Benefits

Small and compact, for applications with high number of contacts

### Application range

Machine and equipment manufacturing

Control engineering

Electronic laboratory

### Product features

Surface-mount base

Single lever

2 cable entries

Last Update (04.10.2025)

©2025 Lapp Group - Technical changes reserved

Product Management [www.lappkabel.de](http://www.lappkabel.de)

You can find the current technical data in the corresponding data sheet.

PN 0456 / 02\_03.16

## EPIC® H-A 16 SGRL-LB

### Technical Data

Classification ETIM 5:	ETIM 5.0 Class-ID: EC000437 ETIM 5.0 Class-Description: Housing for industrial connectors
Classification ETIM 6:	ETIM 6.0 Class-ID: EC000437 ETIM 6.0 Class-Description: Housing for industrial connectors
Material:	Housing: aluminium alloy, grey Lever: zinc-plated steel Sealing: NBR
Protection rating:	IP 65 (latched) NEMA 250, UL50E: 12, 4 (latched)
VDE-tested:	Certified production control: VDE-REG. no.: B437 UL-tested: UL File Number: E75770
Temperature range:	-40°C to +100°C, short-term up to +125°C

### Note

Photographs and graphics are not to scale and do not represent detailed images of the respective products. Prices are net prices without VAT and surcharges. Sale to business customers only.



## EPIC® H-A 16 SGRL-LB

Article number	Article description	M
19568100	H-A 16 SGRL-LB M20	20
19568000	H-A 16 SGRL-LB M25	25

Last Update (04.10.2025)

©2025 Lapp Group - Technical changes reserved

Product Management [www.lappkabel.de](http://www.lappkabel.de)

You can find the current technical data in the corresponding data sheet.

PN 0456 / 02\_03.16