

EPIC® H-A 3 MEGS

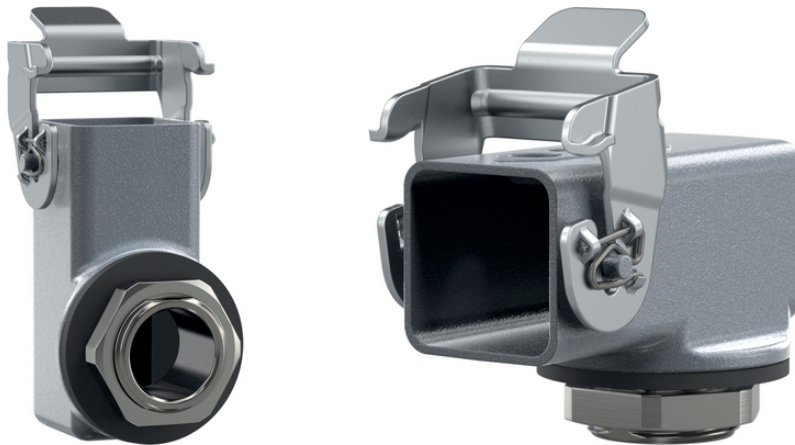
Innovative metal housing

EPIC® Rectangular connector, insert housing angled, with counter nut, IP68, zinc diecasting

Info

Innovative screw mounted housing

Protection rating UL50E tested



Supplementary automation components from Lapp



Food & Beverage



Mechanical and plant engineering



Rail



Mechanical resistance



Robust

Benefits

The EPIC® H-A 3 series comprises the smallest housings in the heavy-duty industrial connector range and ensures secure connections in the smallest of spaces.

The built-in housing is mateable by many commercially available hood housings.

With side cable entry for orderly cable routing and to prevent excessive bending of the cable.

Simple mounting on the enclosure by screwing in and fixing with locknut.

The arrow as a new design element on the surface of the housing is easy to feel and simplifies plugging in spatially confined and possibly poorly visible application areas.

Last Update (24.04.2024)

©2024 Lapp Group - Technical changes reserved

Product Management www.lappkabel.de

You can find the current technical data in the corresponding data sheet.

PN 0456 / 02_03.16

EPIC® H-A 3 MEGS

Application range

To protect the connector insert from environmental influences.
For use with many EPIC® rectangular connector inserts.
For power supply connection of devices and machines in various applications.
Withstands high environmental and mechanical stresses.
Suitable for outdoor use.

Product features

Screw mounted housing including flat gasket and counter nut
1 lever

Technical Data

Classification ETIM 5:	ETIM 5.0 Class-ID: EC000437 ETIM 5.0 Class-Description: Housing for industrial connectors
Classification ETIM 6:	ETIM 6.0 Class-ID: EC000437 ETIM 6.0 Class-Description: Housing for industrial connectors
Material:	Housing: powder-coated zinc die-casting, grey Lever: zinc-plated steel Sealing: NBR Housing: grey thermoplastic, black Lever: zinc-plated steel Sealing: NBR
Protection rating:	IP 65 (latched) NEMA 250, UL50E: 12, 4 (latched)
Temperature range:	-40 °C to +100 °C, short-term up to +125 °C

Note

Photographs and graphics are not to scale and do not represent detailed images of the respective products.
Prices are net prices without VAT and surcharges. Sale to business customers only.

EPIC® H-A 3 MEGS

Article number	Article description	Material	Pieces / PU
10422506	EPIC H-A 3 MEGS	Zinc die-casting	10