

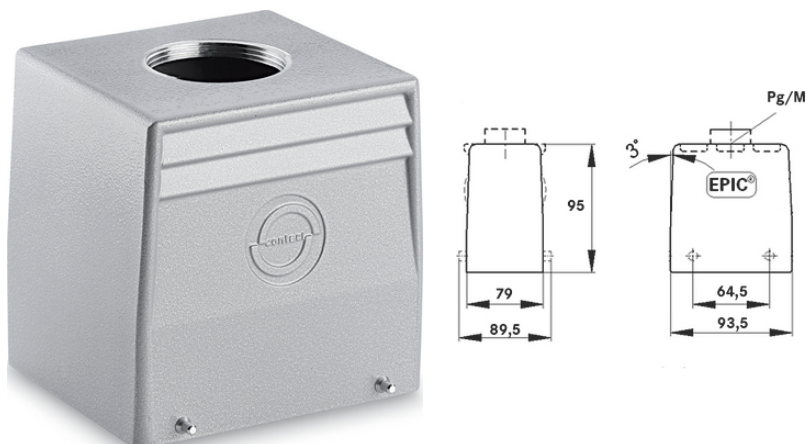
EPIC® H-A 48 TG

Rugged housings for 3 inserts

The highly flexible and robust housing can accommodate 3 inserts and is ideal for machine and device manufacturing.

Info

Compact, robust metal housings for double size H-A 48



Mechanical and plant engineering



Mechanical resistance



Robust



Waterproof

Benefits

Three different inserts, each suitable for housing type H-A 16, can be integrated in this housing. High flexibility
M40 housing extension on M50 with SKINTOP 53112083 possible (clamping range 27 - 35 mm)

Application range

Machine and equipment manufacturing
Control engineering

Product features

Hood
Bolts for double lever
Straight cable entry
Versions with / without neck

Last Update (23.12.2023)

©2023 Lapp Group - Technical changes reserved

Product Management www.lappkabel.de

You can find the current technical data in the corresponding data sheet.

PN 0456 / 02_03.16

EPIC® H-A 48 TG

Technical Data

Classification ETIM 5:	ETIM 5.0 Class-ID: EC000437 ETIM 5.0 Class-Description: Housing for industrial connectors
Classification ETIM 6:	ETIM 6.0 Class-ID: EC000437 ETIM 6.0 Class-Description: Housing for industrial connectors
Material:	Housing: aluminium alloy, grey Lever: zinc-plated steel Sealing: NBR
Protection rating:	IP 65 (latched)
Temperature range:	-40°C to +100°C, short-term up to +125°C

Note

Photographs and graphics are not to scale and do not represent detailed images of the respective products.
Prices are net prices without VAT and surcharges. Sale to business customers only.

EPIC® H-A 48 TG

Article number	Article description	M	PG	Neck	Pieces / PU
H-A housing: hood (straight cable entry, bolts for double lever)					
10631800	H-A 48 TG 29	-	29	yes	1
10631900	H-A 48 TG 29	-	29	-	1
19631800	H-A 48 TG M32	32	-	-	1
19636600	H-A 48 TG M40	40	-	-	1

Last Update (23.12.2023)

©2023 Lapp Group - Technical changes reserved

Product Management www.lappkabel.de

You can find the current technical data in the corresponding data sheet.

PN 0456 / 02_03_16