

EPIC® H-B 10 SGRH

Housing design H-B. The industry standard.

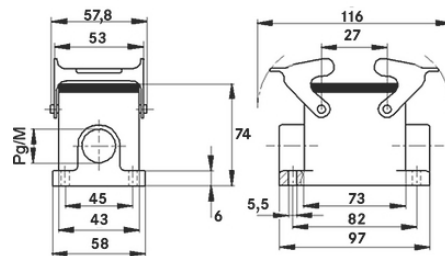
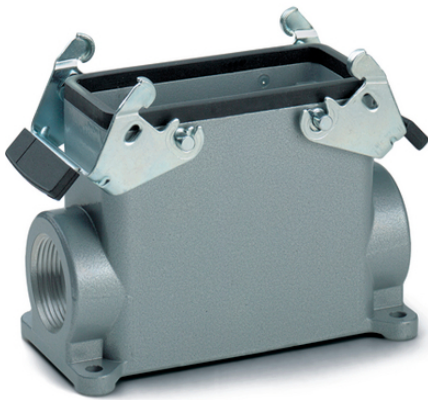
The robust metal housing with 2 double levers and a cable entry is able to withstand temperatures of up to +125 degrees for a short period and is suitable for investment construction.

Info

More interior space for wiring

Double lever version with 2 levers for increased safety

For easy insertion of a cable



Supplementary automation components from Lapp



Mechanical and plant engineering



Mechanical resistance



Robust



Waterproof

Benefits

The smallest housing with single and double lever. The right housing is available for every application

Application range

Plant engineering

Mechanical engineering

Light & sound technology

Plastics industry

Last Update (06.06.2023)

©2023 Lapp Group - Technical changes reserved

Product Management www.lappkabel.de

You can find the current technical data in the corresponding data sheet.

PN 0456 / 02_03.16

EPIC® H-B 10 SGRH

Product features

Surface-mount base, high version
Dual levers
1 cable entry

Technical Data

Classification ETIM 5:	ETIM 5.0 Class-ID: EC000437 ETIM 5.0 Class-Description: Housing for industrial connectors
Classification ETIM 6:	ETIM 6.0 Class-ID: EC000437 ETIM 6.0 Class-Description: Housing for industrial connectors
Material:	Housing: powder-coated aluminium alloy, grey Lever: zinc-plated steel Sealing: NBR
Protection rating:	IP 65 (latched) NEMA 250, UL50E: 12, 4 (latched)
VDE-tested:	Certified production control: VDE-REG. no.: B437 UL-tested: UL File Number: E75770
Temperature range:	-40°C to +100°C, short-term up to +125°C

Note

Photographs and graphics are not to scale and do not represent detailed images of the respective products.
Prices are net prices without VAT and surcharges. Sale to business customers only.

EPIC® H-B 10 SGRH

Article number	Article description	M	PG	Pieces / PU
H-B housing: surface-mount base (1 cable entry, double lever, high version)				
70035200	H-B 10 SGRH 21	-	21	10
70035400	H-B 10 SGRH 29	-	29	10
79035200	H-B 10 SGRH M25	25	-	10
79035400	H-B 10 SGRH M32	32	-	10

Last Update (06.06.2023)

©2023 Lapp Group - Technical changes reserved

Product Management www.lappkabel.de

You can find the current technical data in the corresponding data sheet.

PN 0456 / 02_03_16