

## EPIC® H-B 10 SGRLH

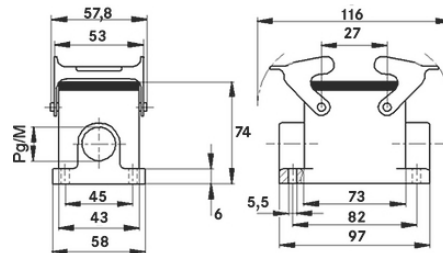
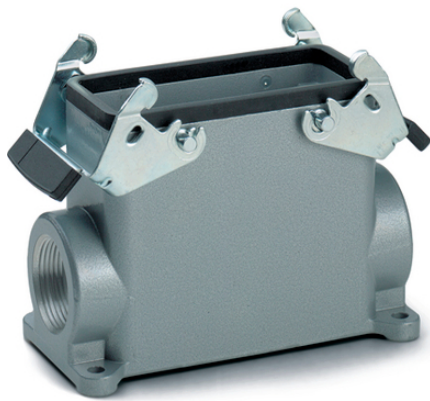
Housing design H-B. The industry standard.

The robust housing is suitable for use in the plastics industry. It consists of high base housing, 2 double levers and 2 cable entries.

### Info

More interior space for wiring

Double lever version with 2 levers for increased safety



Supplementary automation components from Lapp



Mechanical and plant engineering



Mechanical resistance



Robust



Waterproof

### Benefits

The smallest housing with single and double lever. The right housing is available for every application

### Application range

Plant engineering

Light & sound technology

Plastics industry

### Product features

Surface-mount base, high version

Last Update (06.06.2023)

©2023 Lapp Group - Technical changes reserved

Product Management [www.lappkabel.de](http://www.lappkabel.de)

You can find the current technical data in the corresponding data sheet.

PN 0456 / 02\_03.16

## EPIC® H-B 10 SGRLH

Dual levers  
2 cable entries

### Technical Data

Classification ETIM 5:	ETIM 5.0 Class-ID: EC000437 ETIM 5.0 Class-Description: Housing for industrial connectors
Classification ETIM 6:	ETIM 6.0 Class-ID: EC000437 ETIM 6.0 Class-Description: Housing for industrial connectors
Material:	Housing: powder-coated aluminium alloy, grey Lever: zinc-plated steel Sealing: NBR
Protection rating:	IP 65 (latched) NEMA 250, UL50E: 12, 4 (latched)
VDE-tested:	Certified production control: VDE-REG. no.: B437 UL-tested: UL File Number: E75770
Temperature range:	-40°C to +100°C, short-term up to +125°C

### Note

Photographs and graphics are not to scale and do not represent detailed images of the respective products. Prices are net prices without VAT and surcharges. Sale to business customers only.

**EPIC® H-B 10 SGRLH**

Article number	Article description	M	PG	Pieces / PU
H-B housing: surface-mount base (2 cable entries, double lever, high version)				
70036200	H-B 10 SGRLH 21	-	21	10
70036400	H-B 10 SGRLH 29	-	29	10
79036200	H-B 10 SGRLH M25	25	-	10
79036400	H-B 10 SGRLH M32	32	-	10

Last Update (06.06.2023)

©2023 Lapp Group - Technical changes reserved

Product Management [www.lappkabel.de](http://www.lappkabel.de)

You can find the current technical data in the corresponding data sheet.

PN 0456 / 02\_03\_16