

EPIC® H-B 16 Housings

Housing design H-B. The industry standard.

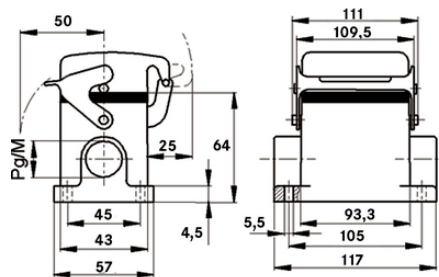
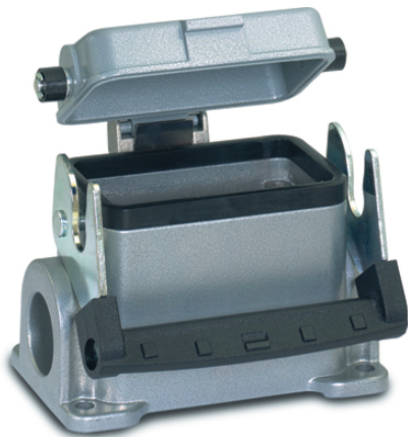
EPIC® Einsätze 12-way for Printed circuit boards

Info

Metal lid with sturdy hinge

Single Lever version for quick locking and simple unlocking with lifting aid

Protection rating UL50E tested



Benefits

The housing standard. Wide choice for all applications

Application range

Plant engineering

Light & sound technology

Plastics industry

Product features

Surface-mount base, low version

Single lever

2 cable entries

Metal cover

Technical Data

Classification ETIM 5:

ETIM 5.0 Class-ID: EC000437

ETIM 5.0 Class-Description: Housing for industrial connectors

Protection rating:

IP 65 (latched)

UL50 Type 12 (latched)

VDE-tested:

Certified production control: VDE-REG. no.: B437

UL-tested:

UL File Number: E75770

Temperature range:

-40°C to +100°C, short-term up to +125°C

Note

Photographs and graphics are not to scale and do not represent detailed images of the respective products.

Prices are net prices without VAT and surcharges. Sale to business customers only.

Last Update (05.09.2020)

©2020 Lapp Group - Technical changes reserved

Product Management www.lappkabel.de

You can find the current technical data in the corresponding data sheet.

PN 0456 / 02_03.16

EPIC® H-B 16 Housings

Article number	Article description	M	PG	Pieces / PU
10076000	H-B 16 SDR-BO 21	-	21	5
70095200	H-B 16 SDRH-BO 21	-	21	5
70114200	H-B 16 SDRH-LB 21	-	21	5
10076900	H-B 16 SDR-LB 21	-	21	5
70096000	H-B 16 SDRL-BO 21	-	21	5
70096200	H-B 16 SDRLH-BO 21	-	21	5
70115200	H-B 16 SDRLH-LB 21	-	21	5
10078900	H-B 16 SDRL-LB 21	-	21	5
19076000	H-B 16 SDR-BO M25	25	-	5
70095400	H-B 16 SDRH-BO 29	-	29	5
70114400	H-B 16 SDRH-LB 29	-	29	5
19076900	H-B 16 SDR-LB M25	25	-	5
79096000	H-B 16 SDRL-BO M25	25	-	5
70115400	H-B 16 SDRLH-LB 29	-	29	5
19078900	H-B 16 SDRL-LB M25	25	-	5
79095200	H-B 16 SDRH-BO M25	25	-	5
79114200	H-B 16 SDRH-LB M25	25	-	5
79096200	H-B 16 SDRLH-BO M25	25	-	5
79115200	H-B 16 SDRLH-LB M25	25	-	5
79095400	H-B 16 SDRH-BO M32	32	-	5
79114400	H-B 16 SDRH-LB M32	32	-	5
79096400	H-B 16 SDRLH-BO M32	32	-	5
79115400	H-B 16 SDRLH-LB M32	32	-	5

Last Update (05.09.2020)

©2020 Lapp Group - Technical changes reserved

 Product Management www.lappkabel.de

You can find the current technical data in the corresponding data sheet.

PN 0456 / 02_03.16