

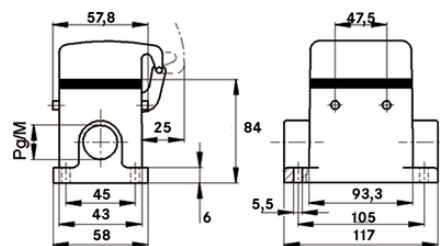
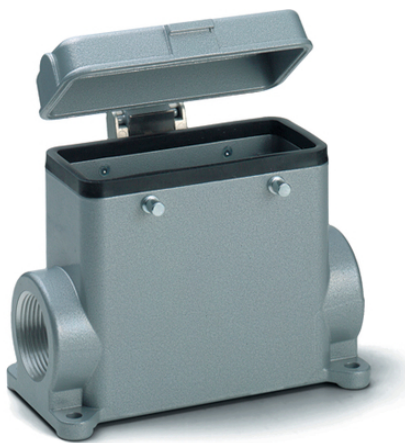
EPIC® H-B 16 SDRH-BO

Housing design H-B. The industry standard.

The robust housing for universal application consists of pivots for the direct lever, a cable entry and a metal cap.

Info

- More interior space for wiring
- Metal lid with sturdy hinge
- Protection rating UL50E tested



Supplementary automation components from Lapp



Mechanical and plant engineering



Mechanical resistance



Robust



Waterproof

Benefits

The housing standard. Wide choice for all applications

Application range

- Plant engineering
- Light & sound technology
- Plastics industry

Product features

Last Update (01.09.2020)

©2020 Lapp Group - Technical changes reserved

Product Management www.lappkabel.de

You can find the current technical data in the corresponding data sheet.

PN 0456 / 02_03.16

EPIC® H-B 16 SDRH-BO

Surface-mount base, high version
Bolts for double lever
1 cable entry
Metal cover

Technical Data

Classification ETIM 5:	ETIM 5.0 Class-ID: EC000437 ETIM 5.0 Class-Description: Housing for industrial connectors
Classification ETIM 6:	ETIM 6.0 Class-ID: EC000437 ETIM 6.0 Class-Description: Housing for industrial connectors
Material:	Housing: powder-coated aluminium alloy, grey Lever: zinc-plated steel Sealing: NBR
Protection rating:	IP 65 (latched) IP 40 (cover closed) NEMA 250, UL50E: 12, 4 (latched)
VDE-tested:	Certified production control: VDE-REG. no.: B437 UL-tested: UL File Number: E75770
Temperature range:	-40°C to +100°C, short-term up to +125°C

Note

Photographs and graphics are not to scale and do not represent detailed images of the respective products.
Prices are net prices without VAT and surcharges. Sale to business customers only.

EPIC® H-B 16 SDRH-BO

Article number	Article description	M	PG	Pieces / PU
H-B housing: surface-mount base (cover, 1 cable entry, bolts for double lever, high version)				
70095200	H-B 16 SDRH-BO 21	-	21	5
70095400	H-B 16 SDRH-BO 29	-	29	5
79095200	H-B 16 SDRH-BO M25	25	-	5
79095400	H-B 16 SDRH-BO M32	32	-	5

Last Update (01.09.2020)

©2020 Lapp Group - Technical changes reserved

Product Management www.lappkabel.de

You can find the current technical data in the corresponding data sheet.

PN 0456 / 02_03.16