

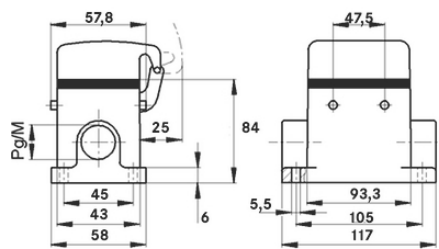
## EPIC® H-B 16 SDRLH-BO

Housing design H-B. The industry standard.

The robust universal metal housing with pivots for a direct lever and 2 cable entries is ideal for use in the plastics industry.

### Info

- Metal lid with sturdy hinge
- For easy introduction of two cables
- Protection rating UL50E tested



Supplementary automation components from Lapp



Mechanical and plant engineering



Mechanical resistance



Robust



Waterproof

### Benefits

- The housing standard. Wide choice for all applications
- More interior space for wiring

### Application range

- Plant engineering
- Light & sound technology
- Plastics industry

Last Update (13.07.2024)

©2024 Lapp Group - Technical changes reserved

Product Management [www.lappkabel.de](http://www.lappkabel.de)

You can find the current technical data in the corresponding data sheet.

PN 0456 / 02\_03.16

## EPIC® H-B 16 SDRLH-BO

### Product features

Surface-mount base, high version  
Bolts for double lever  
2 cable entries  
Metal cover

### Technical Data

Classification ETIM 5:	ETIM 5.0 Class-ID: EC000437 ETIM 5.0 Class-Description: Housing for industrial connectors
Classification ETIM 6:	ETIM 6.0 Class-ID: EC000437 ETIM 6.0 Class-Description: Housing for industrial connectors
Material:	Housing: powder-coated aluminium alloy, grey Lever: zinc-plated steel Sealing: NBR
Protection rating:	IP 65 (latched) IP 40 (cover closed) NEMA 250, UL50E: 12, 4 (latched)
VDE-tested:	Certified production control: VDE-REG. no.: B437 UL-tested: UL File Number: E75770
Temperature range:	-40°C to +100°C, short-term up to +125°C

### Note

Photographs and graphics are not to scale and do not represent detailed images of the respective products. Prices are net prices without VAT and surcharges. Sale to business customers only.

**EPIC® H-B 16 SDRLH-BO**

Article number	Article description	M	PG	Packaging unit
H-B housing: surface-mount base (cover, 2 cable entries, bolts for double lever, high version)				
70096200	H-B 16 SDRLH-BO 21	-	21	5
79096200	H-B 16 SDRLH-BO M25	25	-	5
79096400	H-B 16 SDRLH-BO M32	32	-	5

Last Update (13.07.2024)

©2024 Lapp Group - Technical changes reserved

Product Management [www.lappkabel.de](http://www.lappkabel.de)

You can find the current technical data in the corresponding data sheet.

PN 0456 / 02\_03\_16