

EPIC® H-B 16 SGRH

Housing design H-B. The industry standard.

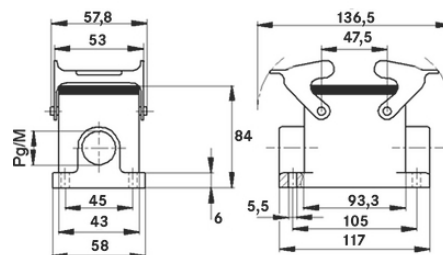
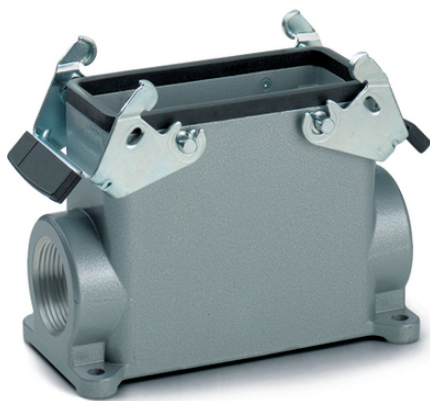
Two double levers, high base housing and a cable entry form the robust universal housing which is suitable for use in the plastics industry.

Info

More interior space for wiring

Double lever version with 2 levers for increased safety

Protection rating UL50E tested



Supplementary automation components from Lapp



Mechanical and plant engineering



Mechanical resistance



Robust



Waterproof

Benefits

The housing standard. Wide choice for all applications

Application range

Plant engineering

Light & sound technology

Plastics industry

Last Update (25.12.2023)

©2023 Lapp Group - Technical changes reserved

Product Management www.lappkabel.de

You can find the current technical data in the corresponding data sheet.

PN 0456 / 02_03.16

EPIC® H-B 16 SGRH

Product features

Surface-mount base, high version

Dual levers

1 cable entry

Technical Data

Classification ETIM 5:

ETIM 5.0 Class-ID: EC000437

ETIM 5.0 Class-Description: Housing for industrial connectors

Classification ETIM 6:

ETIM 6.0 Class-ID: EC000437

ETIM 6.0 Class-Description: Housing for industrial connectors

Material:

Housing: powder-coated aluminium alloy, grey

Lever: zinc-plated steel

Sealing: NBR

Protection rating:

IP 65 (latched)

NEMA 250, UL50E: 12, 4 (latched)

VDE-tested:

Certified production control: VDE-REG. no.: B437

UL-tested:

UL File Number: E75770

Temperature range:

-40°C to +100°C, short-term up to +125°C

Note

Photographs and graphics are not to scale and do not represent detailed images of the respective products.

Prices are net prices without VAT and surcharges. Sale to business customers only.

EPIC® H-B 16 SGRH

Article number	Article description	M	PG	Pieces / PU
H-B housing: surface-mount base (1 cable entry, double lever, high version)				
70085200	H-B 16 SGRH 21	-	21	5
70085400	H-B 16 SGRH 29	-	29	5
79085200	H-B 16 SGRH M25	25	-	5
79085400	H-B 16 SGRH M32	32	-	5

Last Update (25.12.2023)

©2023 Lapp Group - Technical changes reserved

Product Management www.lappkabel.de

You can find the current technical data in the corresponding data sheet.

PN 0456 / 02_03.16