

## EPIC® H-B 16 SGRLH-LB

Housing design H-B. The industry standard.

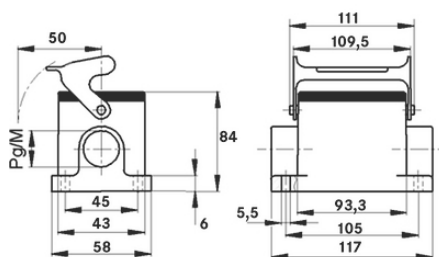
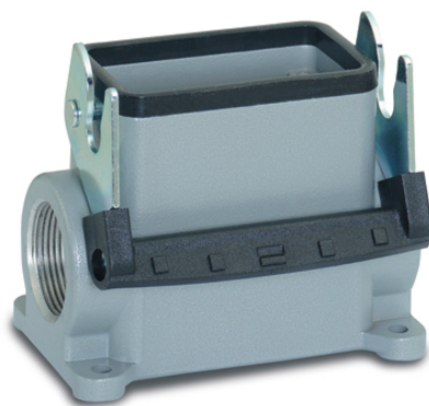
The robust metal housing with a single lever and 2 cable entries is ideal for use in lighting and sound systems.

### Info

Single Lever version for quick locking and simple unlocking with lifting aid

For easy introduction of two cables

Protection rating UL50E tested



Supplementary automation components from Lapp



Mechanical and plant engineering



Mechanical resistance



Robust



Waterproof

### Benefits

The housing standard. Wide choice for all applications

More interior space for wiring

### Application range

Plant engineering

Light & sound technology

Plastics industry

Last Update (26.04.2024)

©2024 Lapp Group - Technical changes reserved

Product Management [www.lappkabel.de](http://www.lappkabel.de)

You can find the current technical data in the corresponding data sheet.

PN 0456 / 02\_03.16

## EPIC® H-B 16 SGRLH-LB

### Product features

Surface-mount base, high version  
Single lever  
2 cable entries

### Technical Data

|                        |  |
|------------------------|--|
| Classification ETIM 5: | ETIM 5.0 Class-ID: EC000437<br>ETIM 5.0 Class-Description: Housing for industrial connectors |
| Classification ETIM 6: | ETIM 6.0 Class-ID: EC000437<br>ETIM 6.0 Class-Description: Housing for industrial connectors |
| Material:              | Housing: powder-coated aluminium alloy, grey<br>Lever: zinc-plated steel<br>Sealing: NBR     |
| Protection rating:     | IP 65 (latched)<br>UL50 Type 12 (latched)  |
| VDE-tested:            | Certified production control: VDE-REG. no.: B437<br>UL-tested:<br>UL File Number: E75770     |
| Temperature range:     | -40°C to +100°C, short-term up to +125°C   |

### Note

Photographs and graphics are not to scale and do not represent detailed images of the respective products.  
Prices are net prices without VAT and surcharges. Sale to business customers only.

**EPIC® H-B 16 SGRLH-LB**

| Article number  | Article description | M  | PG | Pieces / PU |
|---|---------------------|----|----|-------------|
| H-B housing: surface-mount base (2 cable entries, single lever, high version) |                     |    |    |             |
| 70111200  | H-B 16 SGRLH-LB 21  | -  | 21 | 5           |
| 70111400  | H-B 16 SGRLH-LB 29  | -  | 29 | 5           |
| 79111200  | H-B 16 SGRLH-LB M25 | 25 | -  | 5           |
| 79111400  | H-B 16 SGRLH-LB M32 | 32 | -  | 5           |