

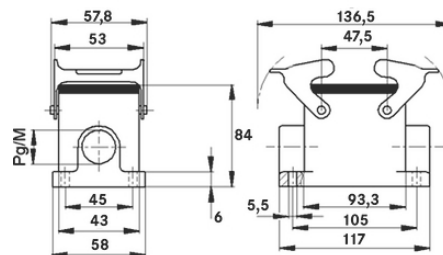
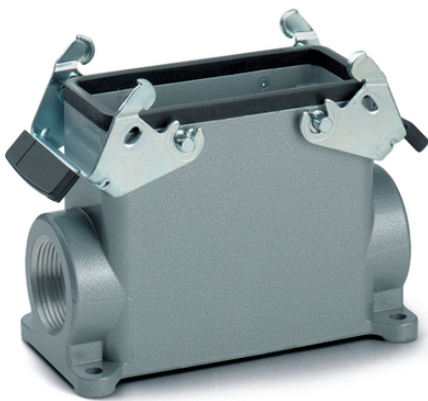
## EPIC® H-B 16 SGRLH

Housing design H-B. The industry standard.

The high metal housing consists of 2 double levers and 2 cable entries and is ideal for investment construction.

### Info

More interior space for wiring  
 For easy introduction of two cables  
 Protection rating UL50E tested



Supplementary automation components from Lapp



Mechanical and plant engineering



Mechanical resistance



Robust



Waterproof

### Benefits

The housing standard. Wide choice for all applications  
 Double lever version with 2 levers for increased safety

### Application range

Plant engineering  
 Light & sound technology  
 Plastics industry

Last Update (16.07.2024)

©2024 Lapp Group - Technical changes reserved

Product Management [www.lappkabel.de](http://www.lappkabel.de)

You can find the current technical data in the corresponding data sheet.

PN 0456 / 02\_03.16

## EPIC® H-B 16 SGRLH

### Product features

Surface-mount base, high version  
Dual levers  
2 cable entries

### Technical Data

|                        |  |
|------------------------|--|
| Classification ETIM 5: | ETIM 5.0 Class-ID: EC000437<br>ETIM 5.0 Class-Description: Housing for industrial connectors |
| Classification ETIM 6: | ETIM 6.0 Class-ID: EC000437<br>ETIM 6.0 Class-Description: Housing for industrial connectors |
| Material:              | Housing: powder-coated aluminium alloy, grey<br>Lever: zinc-plated steel<br>Sealing: NBR     |
| Protection rating:     | IP 65 (latched)<br>NEMA 250, UL50E: 12, 4 (latched)  |
| VDE-tested:            | Certified production control: VDE-REG. no.: B437<br>UL-tested:<br>UL File Number: E75770     |
| Temperature range:     | -40°C to +100°C, short-term up to +125°C   |

### Note

Photographs and graphics are not to scale and do not represent detailed images of the respective products.  
Prices are net prices without VAT and surcharges. Sale to business customers only.

**EPIC® H-B 16 SGRLH**

| Article number  | Article description | M  | PG | Packaging unit |
|---|---------------------|----|----|----------------|
| H-B housing: surface-mount base (2 cable entries, double lever, high version) |                     |    |    |                |
| 70086200  | H-B 16 SGRLH 21     | -  | 21 | 5              |
| 70086400  | H-B 16 SGRLH 29     | -  | 29 | 5              |
| 79086200  | H-B 16 SGRLH M25    | 25 | -  | 5              |
| 79086400  | H-B 16 SGRLH M32    | 32 | -  | 5              |

Last Update (16.07.2024)

©2024 Lapp Group - Technical changes reserved

Product Management [www.lappkabel.de](http://www.lappkabel.de)

You can find the current technical data in the corresponding data sheet.

PN 0456 / 02\_03\_16