

EPIC® H-B 16 TSBH

Housing design H-B. The industry standard.

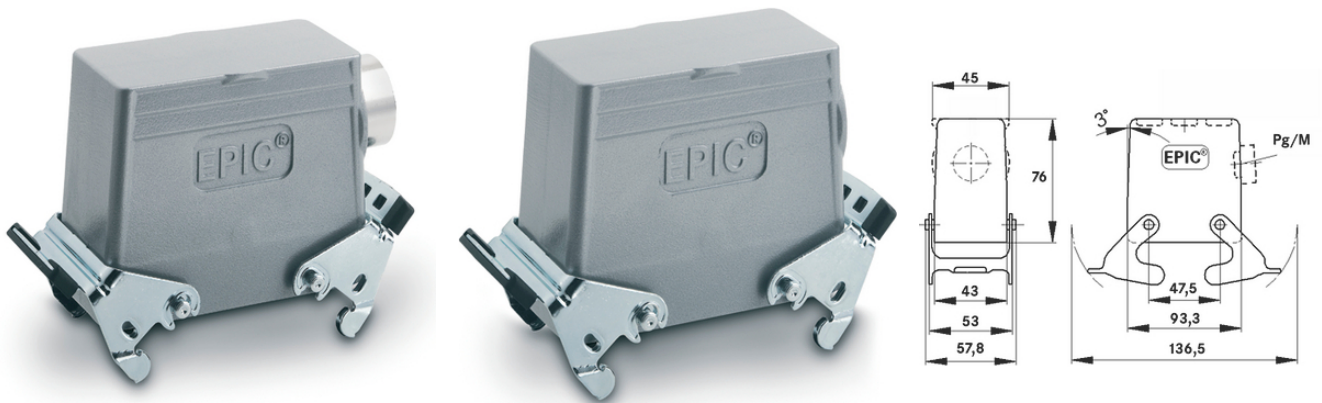
The robust housing for rectangular connectors has 2 double levers and a side cable entry and is available with or without a neck.

Info

More interior space for wiring

For connection with counterpart with integrated cover

NEMA 250, UL50E: 12, 4 (latched)



Supplementary automation components from Lapp



Mechanical and plant engineering



Mechanical resistance



Robust



Waterproof

Benefits

The housing standard. Wide choice for all applications

Double lever version with 2 levers for increased safety

Application range

Plant engineering

Light & sound technology

Plastics industry

Last Update (24.07.2024)

©2024 Lapp Group - Technical changes reserved

Product Management www.lappkabel.de

You can find the current technical data in the corresponding data sheet.

PN 0456 / 02_03.16

EPIC® H-B 16 TSBH

Product features

Hood, high version
Dual levers
Side cable entry
Versions with / without neck

Technical Data

Classification ETIM 5:	ETIM 5.0 Class-ID: EC000437 ETIM 5.0 Class-Description: Housing for industrial connectors
Classification ETIM 6:	ETIM 6.0 Class-ID: EC000437 ETIM 6.0 Class-Description: Housing for industrial connectors
Material:	Housing: powder-coated aluminium alloy, grey Lever: zinc-plated steel Sealing: NBR
Protection rating:	IP 65 (latched)
VDE-tested:	Certified production control: VDE-REG. no.: B437 UL-tested: UL File Number: E75770
Temperature range:	-40°C to +100°C, short-term up to +125°C

Note

Photographs and graphics are not to scale and do not represent detailed images of the respective products.
Prices are net prices without VAT and surcharges. Sale to business customers only.

EPIC® H-B 16 TSBH

Article number	Article description	M	PG	Neck	Packaging unit
H-B housing: hood (side cable entry, double lever, high version)					
70107200	H-B 16 TSBH 21	-	21	yes	5
70107400	H-B 16 TSBH 29	-	29	yes	5
79107200	H-B 16 TSBH M25	25	-	-	5
79107400	H-B 16 TSBH M32	32	-	-	5

Last Update (24.07.2024)

©2024 Lapp Group - Technical changes reserved

Product Management www.lappkabel.de

You can find the current technical data in the corresponding data sheet.
PN 0456 / 02_03_16