

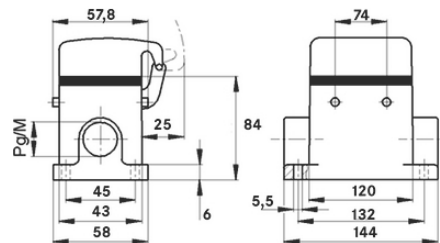
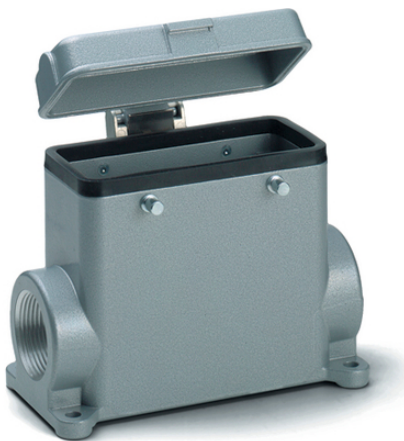
EPIC® H-B 24 SDRH-BO

Housing design H-B. The industry standard.

The universal high metal housing consists of pivots for a double lever and a cable entry and is suitable, for example, for use in the plastics industry.

Info

More interior space for wiring
 Metal lid with sturdy hinge
 Protection rating UL50E tested



Supplementary automation components from Lapp



Mechanical and plant engineering



Mechanical resistance



Robust



Waterproof

Benefits

Safe fixing with 4 screws
 Casted neck for easy assembly of the cable gland

Application range

Plant engineering
 Light & sound technology
 Plastics industry

Last Update (22.07.2024)

©2024 Lapp Group - Technical changes reserved

Product Management www.lappkabel.de

You can find the current technical data in the corresponding data sheet.

PN 0456 / 02_03.16

EPIC® H-B 24 SDRH-BO

Product features

Surface-mount base, high version
Bolts for double lever
1 cable entry
Metal cover

Technical Data

Classification ETIM 5:	ETIM 5.0 Class-ID: EC000437 ETIM 5.0 Class-Description: Housing for industrial connectors
Classification ETIM 6:	ETIM 6.0 Class-ID: EC000437 ETIM 6.0 Class-Description: Housing for industrial connectors
Material:	Housing: powder-coated aluminium alloy, grey Lever: zinc-plated steel Sealing: NBR
Protection rating:	IP 65 (latched) IP 40 (cover closed) NEMA 250, UL50E: 12, 4 (latched)
VDE-tested:	Certified production control: VDE-REG. no.: B437 UL-tested: UL File Number: E75770
Temperature range:	-40°C to +100°C, short-term up to +125°C

Note

Photographs and graphics are not to scale and do not represent detailed images of the respective products. Prices are net prices without VAT and surcharges. Sale to business customers only.

EPIC® H-B 24 SDRH-BO

Article number	Article description	M	PG	Packaging unit
H-B housing: surface-mount base (cover, 1 cable entry, bolts for double lever, high version)				
70145200	H-B 24 SDRH-BO 21	-	21	5
70145400	H-B 24 SDRH-BO 29	-	29	5
79145400	H-B 24 SDRH-BO M32	32	-	5

Last Update (22.07.2024)

©2024 Lapp Group - Technical changes reserved

Product Management www.lappkabel.de

You can find the current technical data in the corresponding data sheet.

PN 0456 / 02_03_16