

EPIC® H-B 24 SDRLH-LB

Housing design H-B. The industry standard.

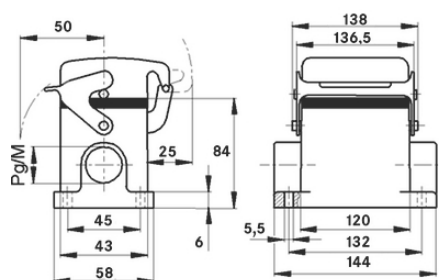
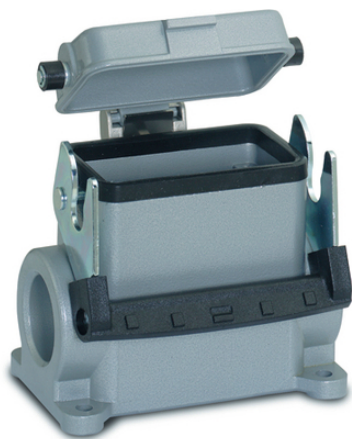
The robust metal housing with 2 cable entries and a single lever is ideal for use in lighting and sound systems.

Info

More interior space for wiring

Metal lid with sturdy hinge

Protection rating UL50E tested



Supplementary automation components from Lapp



Mechanical and plant engineering



Mechanical resistance



Robust



Waterproof

Benefits

Safe fixing with 4 screws

Casted neck for easy assembly of the cable gland

Single Lever version for quick locking and simple unlocking with lifting aid

Application range

Plant engineering

Light & sound technology

Plastics industry

Last Update (25.12.2023)

©2023 Lapp Group - Technical changes reserved

Product Management www.lappkabel.de

You can find the current technical data in the corresponding data sheet.

PN 0456 / 02_03.16

EPIC® H-B 24 SDRLH-LB

Product features

Surface-mount base, high version
Single lever
2 cable entries
Metal cover

Technical Data

| | |
|------------------------|--|
| Classification ETIM 5: | ETIM 5.0 Class-ID: EC000437 ETIM 5.0 Class-Description: Housing for industrial connectors |
| Classification ETIM 6: | ETIM 6.0 Class-ID: EC000437 ETIM 6.0 Class-Description: Housing for industrial connectors |
| Material: | Housing: powder-coated aluminium alloy, grey Lever: zinc-plated steel Sealing: NBR |
| Protection rating: | IP 65 (latched) NEMA 250, UL50E: 12 (latched) |
| VDE-tested: | Certified production control: VDE-REG. no.: B437 UL-tested: UL File Number: E75770 |
| Temperature range: | -40 °C to +100 °C, short-term up to +125 °C |

Note

Photographs and graphics are not to scale and do not represent detailed images of the respective products.
Prices are net prices without VAT and surcharges. Sale to business customers only.

EPIC® H-B 24 SDRLH-LB

| Article number | Article description | M | PG | Pieces / PU |
|--|---------------------|----|----|-------------|
| H-B housing: surface-mount base (cover, 2 cable entries, single lever, high version) | | | | |
| 70165200 | H-B 24 SDRLH-LB 21 | - | 21 | 5 |
| 70165400 | H-B 24 SDRLH-LB 29 | - | 29 | 5 |
| 79165200 | H-B 24 SDRLH-LB M25 | 25 | - | 5 |
| 79165400 | H-B 24 SDRLH-LB M32 | 32 | - | 5 |

Last Update (25.12.2023)

©2023 Lapp Group - Technical changes reserved

Product Management www.lappkabel.de

You can find the current technical data in the corresponding data sheet.

PN 0456 / 02_03.16