

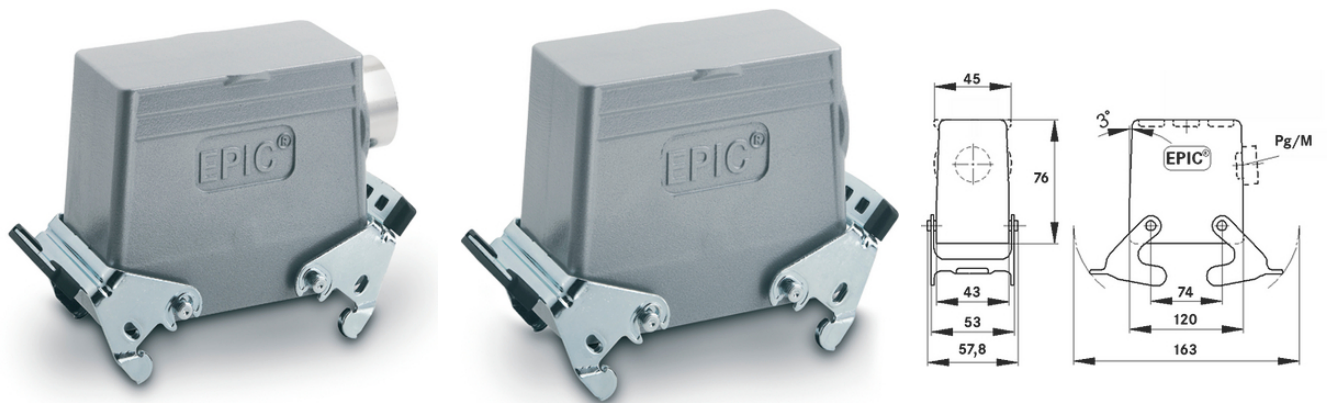
## EPIC® H-B 24 TSBH

Housing design H-B. The industry standard.

The robust metal housing for rectangular connectors consists of 2 double levers and a side cable entry and can be used for lighting and sound systems.

### Info

Non-slip ridges for comfortable disconnecting  
For connection with counterpart with integrated cover  
Protection rating UL50E tested



Supplementary automation components from Lapp



Mechanical and plant engineering



Mechanical resistance



Robust



Waterproof

### Benefits

Ideal for many applications due to a wide range of housings and inserts  
Double lever version with 2 levers for increased safety

### Application range

Plant engineering  
Light & sound technology  
Plastics industry

Last Update (21.12.2023)

©2023 Lapp Group - Technical changes reserved

Product Management [www.lappkabel.de](http://www.lappkabel.de)

You can find the current technical data in the corresponding data sheet.

PN 0456 / 02\_03.16

## EPIC® H-B 24 TSBH

### Product features

Hood, high version  
Dual levers  
Side cable entry  
Versions with / without neck

### Technical Data

|                        |  |
|------------------------|--|
| Classification ETIM 5: | ETIM 5.0 Class-ID: EC000437<br>ETIM 5.0 Class-Description: Housing for industrial connectors |
| Classification ETIM 6: | ETIM 6.0 Class-ID: EC000437<br>ETIM 6.0 Class-Description: Housing for industrial connectors |
| Material:              | Housing: powder-coated aluminium alloy, grey<br>Lever: zinc-plated steel<br>Sealing: NBR     |
| Protection rating:     | IP 65 (latched)<br>NEMA 250, UL50E: 12, 4 (latched)  |
| VDE-tested:            | Certified production control: VDE-REG. no.: B437<br>UL-tested:<br>UL File Number: E75770     |
| Temperature range:     | -40 °C to +100 °C, short-term up to +125 °C  |

### Note

Photographs and graphics are not to scale and do not represent detailed images of the respective products.  
Prices are net prices without VAT and surcharges. Sale to business customers only.

**EPIC® H-B 24 TSBH**

| Article number   | Article description | M  | PG | Neck | Pieces / PU |
|--|---------------------|----|----|------|-------------|
| H-B housing: hood (side cable entry, double lever, high version) |                     |    |    |      |             |
| 70157400   | H-B 24 TSBH 21      | -  | 21 | yes  | 5           |
| 70157600   | H-B 24 TSBH 29      | -  | 29 | yes  | 5           |
| 79157400   | H-B 24 TSBH M25     | 25 | -  | -    | 5           |
| 79157600   | H-B 24 TSBH M32     | 32 | -  | -    | 5           |