

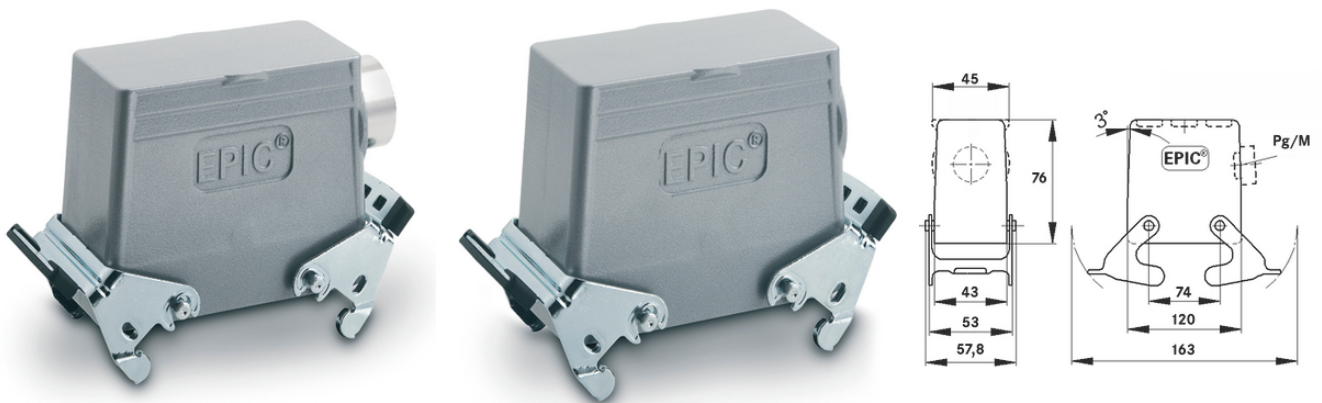
EPIC® H-B 24 TSBH






Housing design H-B. The industry standard.

The robust metal housing for rectangular connectors consists of 2 double levers and a side cable entry and can be used for lighting and sound systems.

Info

Non-slip ridges for comfortable disconnecting
 For connection with counterpart with integrated cover
 Protection rating UL50E tested



-  Supplementary automation components from Lapp
-  Mechanical and plant engineering
-  Mechanical resistance
-  Robust
-  Waterproof

Benefits

Ideal for many applications due to a wide range of housings and inserts
 Double lever version with 2 levers for increased safety

Application range

Plant engineering
 Light & sound technology
 Plastics industry

Last Update (17.02.2026)

©2026 Lapp Group - Technical changes reserved

Product Management www.lappkabel.de

You can find the current technical data in the corresponding data sheet.

PN 0456 / 02_03.16

EPIC® H-B 24 TSBH

Product features

Hood, high version
Dual levers
Side cable entry
Versions with / without neck

Technical Data

Classification ETIM 5:	ETIM 5.0 Class-ID: EC000437 ETIM 5.0 Class-Description: Housing for industrial connectors
Classification ETIM 6:	ETIM 6.0 Class-ID: EC000437 ETIM 6.0 Class-Description: Housing for industrial connectors
Material:	Housing: powder-coated aluminium alloy, grey Lever: zinc-plated steel Sealing: NBR
Protection rating:	IP 65 (latched) NEMA 250, UL50E: 12, 4 (latched)
VDE-tested:	Certified production control: VDE-REG. no.: B437 UL-tested: UL File Number: E75770
Temperature range:	-40 °C to +100 °C, short-term up to +125 °C

Note

Photographs and graphics are not to scale and do not represent detailed images of the respective products.
Prices are net prices without VAT and surcharges. Sale to business customers only.



EPIC® H-B 24 TSBH

Article number	Article description	M	PG	Neck	Packaging unit
70157600	H-B 24 TSBH 29	-	29	yes	5
79157400	H-B 24 TSBH M25	25	-	-	5
79157600	H-B 24 TSBH M32	32	-	-	5

Last Update (17.02.2026)

©2026 Lapp Group - Technical changes reserved

Product Management www.lappkabel.de

You can find the current technical data in the corresponding data sheet.

PN 0456 / 02_03_16