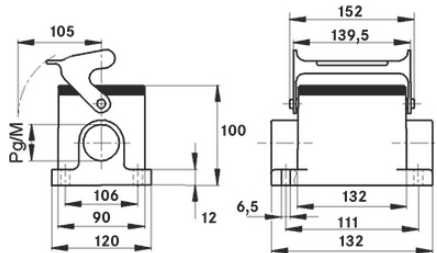
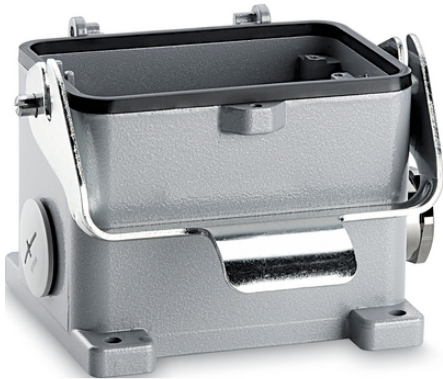


EPIC® H-B 48 SGRL-LB

Housing design H-B for 2 inserts.

The robust housing with 2 cable entries and a single lever can be used in the areas of investment construction and the plastics industry.



Benefits

The large, robust housing for two inserts in one connector. Power and data in a single connector
M40 housing extension on M50 with SKINTOP 53112083 possible (clamping range 27 - 35 mm)

Application range

Plant engineering
Plastics industry

Product features

Surface-mount base
Single lever
2 cable entries

Technical Data

Classification ETIM 5:

ETIM 5.0 Class-ID: EC000437

ETIM 5.0 Class-Description: Housing for industrial connectors

Classification ETIM 6:

ETIM 6.0 Class-ID: EC000437

ETIM 6.0 Class-Description: Housing for industrial connectors

Material:

Housing: powder-coated aluminium alloy, grey

Lever: zinc-plated steel

Sealing: NBR

Protection rating:

IP 65 (latched)

Temperature range:

-40°C to +100°C, short-term up to +125°C

Note

Photographs and graphics are not to scale and do not represent detailed images of the respective products.

Last Update (21.12.2023)

©2023 Lapp Group - Technical changes reserved

Product Management www.lappkabel.de

You can find the current technical data in the corresponding data sheet.

PN 0456 / 02_03.16

EPIC® H-B 48 SGRL-LB

Prices are net prices without VAT and surcharges. Sale to business customers only.

EPIC® H-B 48 SGRL-LB

Article number	Article description	M	PG	Pieces / PU
H-B housing: surface-mount base (2 cable entries, single lever)				
10166000	H-B 48 SGRL 29	-	29	1
10166100	H-B 48 SGRL 36	-	36	1
19166000	H-B 48 SGRL M32	32	-	1
19166100	H-B 48 SGRL M40	40	-	1

Last Update (21.12.2023)

©2023 Lapp Group - Technical changes reserved

Product Management www.lappkabel.de

You can find the current technical data in the corresponding data sheet.

PN 0456 / 02_03.16