

## EPIC® H-BE 16 Cage clamp

The proven standard inserts for easy assembly

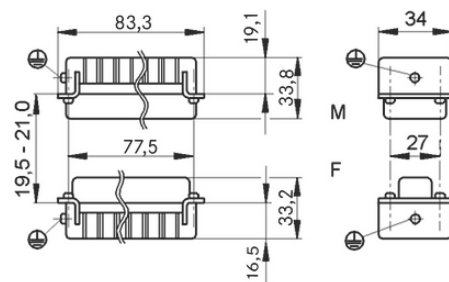
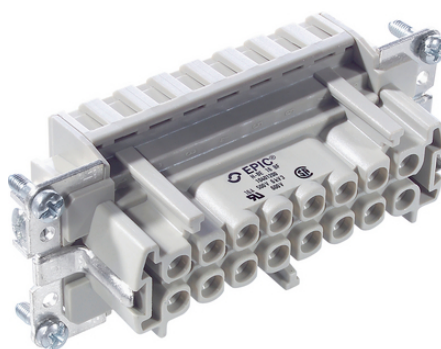
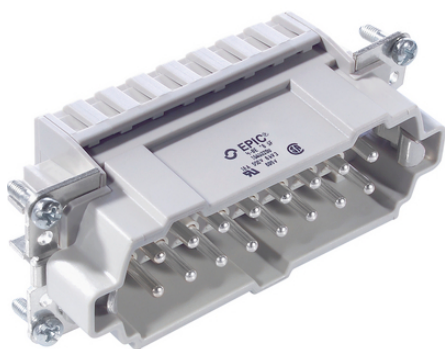
The connector insert for rectangular connectors is ideal for reliable application at higher voltages and currents, for example in the plastics industry.

### Info

Multifunctional insert for versatile applications

Screw, crimp, cage clamp and Push-In version - freely combinable

Also as EPIC® H-BE 32 available



Supplementary automation components from Lapp



Mechanical and plant engineering



Assembly time



Robust



Temperature-resistant

### Benefits

Standard inserts with screw, crimp cage clamp and Push-In termination

The EPIC® H-BE series is suitable for applications that require a reliable connection when working with high voltages and currents

### Application range

Mechanical engineering

Light & sound technology

Plastics industry

Last Update (26.12.2023)

©2023 Lapp Group - Technical changes reserved

Product Management [www.lappkabel.de](http://www.lappkabel.de)

You can find the current technical data in the corresponding data sheet.

PN 0456 / 02\_03.16

## EPIC® H-BE 16 Cage clamp

### Technical Data

Classification ETIM 5:	ETIM 5.0 Class-ID: EC000438 ETIM 5.0 Class-Description: Contact insert for industrial connectors
Classification ETIM 6:	ETIM 6.0 Class-ID: EC000438 ETIM 6.0 Class-Description: Contact insert for industrial connectors
Rated voltage (V):	IEC: 500 VUL: 600 VCSA: 600 V
Rated impulse voltage:	6 kV
Rated current (A):	IEC: 16 A UL: 16 A CSA: 16 A
Pollution degree:	3
Contact resistance:	1.5 - 4 mohm
Contacts:	Copper alloy, hard silver-plated
Number of contacts:	16 + PE
Termination methods:	Cage clamp termination: 0.5 - 2.5 mm <sup>2</sup>
Stripping length (mm):	7
Cycle of mechanical operation:	100
Certifications:	UL-tested: UL File Number: E75770
Temperature range:	-40°C to +100°C, short-term up to +125°C

### Note

Photographs and graphics are not to scale and do not represent detailed images of the respective products.  
Prices are net prices without VAT and surcharges. Sale to business customers only.

## EPIC® H-BE 16 Cage clamp

Article number	Article description	Contact type	Wire protection	Number of operating contacts	Pieces / PU
H-BE 16 cage clamp termination					
10400200	EPIC® H-BE 16 SF	male	yes	1 -16	5
10401200	EPIC® H-BE 16 BF	female	yes	1 -16	5

Last Update (26.12.2023)

©2023 Lapp Group - Technical changes reserved

Product Management [www.lappkabel.de](http://www.lappkabel.de)

You can find the current technical data in the corresponding data sheet.

PN 0456 / 02\_03.16