

## EPIC® H-BE 16 Crimp termination

The proven standard inserts for easy assembly

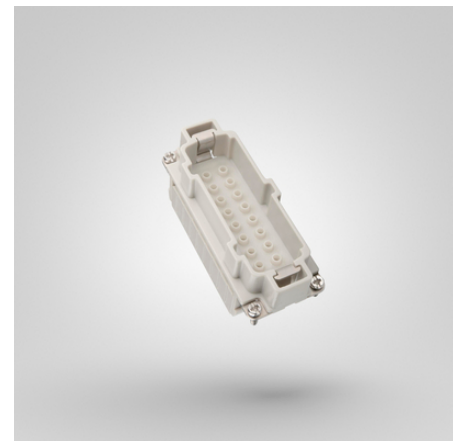
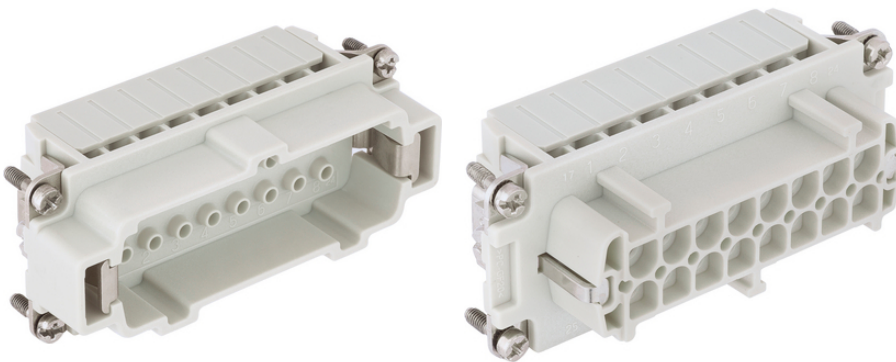
The insert with crimp termination and 16 contacts is intended for use in rectangular connectors and is suitable, for example, for lighting and sound systems.

### Info

For wire connection up to 4 mm<sup>2</sup>

Screw, crimp, cage clamp and Push-In version - freely combinable

Also as EPIC® H-BE 32 available



Supplementary automation components from Lapp



Mechanical and plant engineering



Rail



Robust



Temperature-resistant

### Benefits

Standard inserts with screw, crimp cage clamp and Push-In termination

The EPIC® H-BE series is suitable for applications that require a reliable connection when working with high voltages and currents

Railway applications

- Fire protection on railway vehicles: Test according to EN 45545-2. Requirement sets R22 and R23. Hazard level HL1, HL2 and HL3

### Application range

Mechanical engineering

Plastics industry

Last Update (15.07.2024)

©2024 Lapp Group - Technical changes reserved

Product Management [www.lappkabel.de](http://www.lappkabel.de)

You can find the current technical data in the corresponding data sheet.

PN 0456 / 02\_03.16

## EPIC® H-BE 16 Crimp termination

Light & sound technology  
Railway applications / vehicle construction

### Technical Data

Classification ETIM 5:	ETIM 5.0 Class-ID: EC000438 ETIM 5.0 Class-Description: Contact insert for industrial connectors
Classification ETIM 6:	ETIM 6.0 Class-ID: EC000438 ETIM 6.0 Class-Description: Contact insert for industrial connectors
Rated voltage (V):	IEC: 500 VUL: 600 VCSA: 600 V
Rated impulse voltage:	6 kV
Rated current (A):	IEC: 16 A UL: 16 A CSA: 16 A
Pollution degree:	3
Flammability:	UL94 V-0
Contact resistance:	< 2 mOhm
Contacts:	Copper alloy, hard silver/gold-plated
Number of contacts:	16 + PE
Termination methods:	Crimp termination: 0.14 - 4.0 mm <sup>2</sup>
Material:	PC, polycarbonate
Cycle of mechanical operation:	500
Certifications:	UL-tested: UL File Number: E75770
Temperature range:	-40 °C to +125 °C

### Note

Photographs and graphics are not to scale and do not represent detailed images of the respective products.  
Prices are net prices without VAT and surcharges. Sale to business customers only.

## EPIC® H-BE 16 Crimp termination

Article number	Article description	Contact type	Number of operating contacts	Packaging unit
10184002	EPIC® H-BE 16 SCM	male	1 -16	5
10185002	EPIC® H-BE 16 BCM	female	1 -16	5

Last Update (15.07.2024)

©2024 Lapp Group - Technical changes reserved

Product Management [www.lappkabel.de](http://www.lappkabel.de)

You can find the current technical data in the corresponding data sheet.

PN 0456 / 02\_03\_16

**EPIC® H-BE 16 Crimp termination**

