

EPIC® H-BE 16 Screw termination

The proven standard inserts for easy assembly

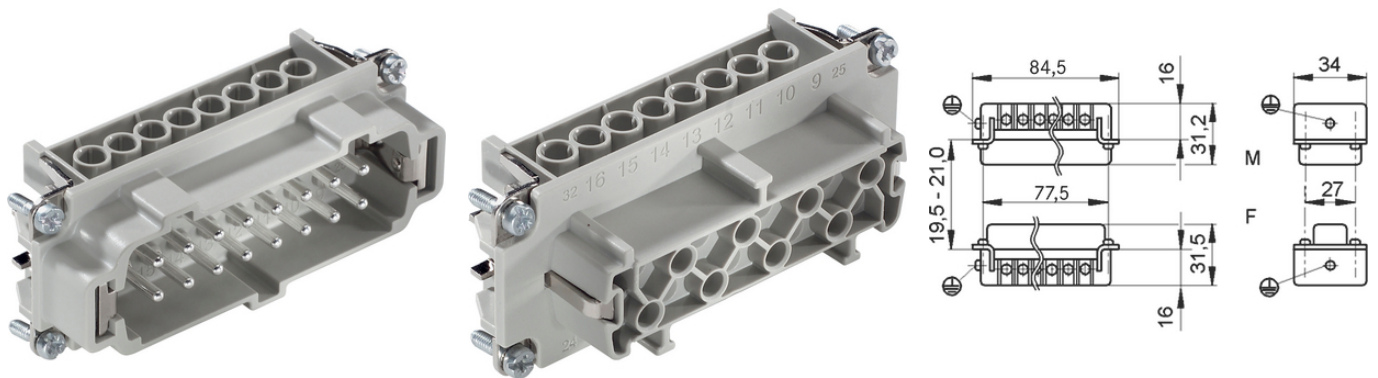
The multi-functional insert with screw termination can be used for a broad range of applications. It can be used, for example, in the plastics industry.

Info

Proven screw for easy installation

Screw, crimp, cage clamp and Push-In version - freely combinable

Made in Germany



Supplementary automation components from Lapp



Mechanical and plant engineering



Rail



Robust



Temperature-resistant



Benefits

Standard inserts with screw, crimp cage clamp and Push-In termination

The EPIC® H-BE series is suitable for applications that require a reliable connection when working with high voltages and currents
Railway applications

- Fire protection on railway vehicles: Test according EN 45545-2. Requirement sets R22 and R23. Hazard level HL1, HL2 and HL3
UL tested for application in control cabinets according UL 508 / UL 2237

Last Update (21.02.2024)

©2024 Lapp Group - Technical changes reserved

Product Management www.lappkabel.de

You can find the current technical data in the corresponding data sheet.

PN 0456 / 02_03.16

EPIC® H-BE 16 Screw termination

Application range

Mechanical engineering
Plastics industry
Light & sound technology
Railway applications / vehicle construction

Technical Data

Classification ETIM 5:	ETIM 5.0 Class-ID: EC000438 ETIM 5.0 Class-Description: Contact insert for industrial connectors
Classification ETIM 6:	ETIM 6.0 Class-ID: EC000438 ETIM 6.0 Class-Description: Contact insert for industrial connectors
Rated voltage (V):	IEC: 500 VUL: 600 VCSA: 600 V
Rated impulse voltage:	6 kV
Rated current (A):	IEC: 16 A UL: 16 A CSA: 16 A
Pollution degree:	3
Flammability:	UL94 V-0
Contact resistance:	< 2 mOhm
Contacts:	Copper alloy, hard silver-plated
Number of contacts:	16 + PE
Termination methods:	Screw termination: 0.5 - 2.5 mm ²
Stripping length (mm):	8
Material:	PC, polycarbonate
Cycle of mechanical operation:	500
Certifications:	Certified production control: VDE-REG. no.: B437 UL-tested: UL File Number: E75770 and E483837
Temperature range:	-40°C to +100°C, short-term up to +125°C

Note

Photographs and graphics are not to scale and do not represent detailed images of the respective products.
Prices are net prices without VAT and surcharges. Sale to business customers only.

EPIC® H-BE 16 Screw termination

Article number	Article description	Contact type	Wire protection	Number of operating contacts	Pieces / PU
H-BE 16 screw termination					
10194000	EPIC® H-BE 16 SS	male	yes	1 -16	5
10195000	EPIC® H-BE 16 BS	female	yes	1 -16	5
10194100	EPIC® H-BE 16 SS	male	-	1 -16	5
10195100	EPIC® H-BE 16 BS	female	-	1 -16	5

Last Update (21.02.2024)

©2024 Lapp Group - Technical changes reserved

Product Management www.lappkabel.de

You can find the current technical data in the corresponding data sheet.

PN 0456 / 02_03.16