

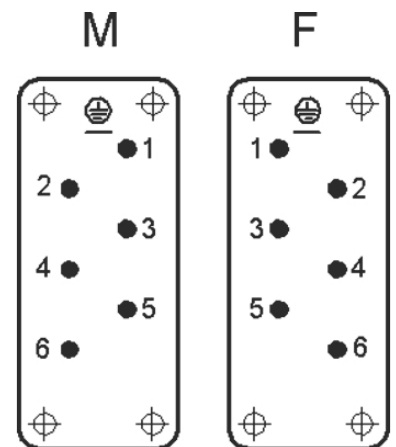
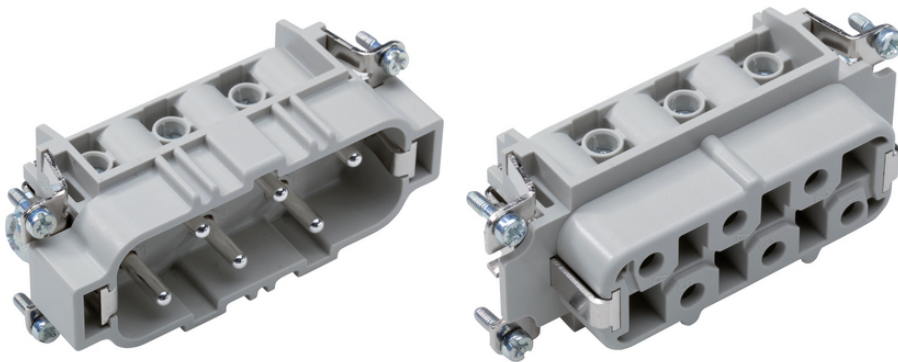
EPIC® H-BS 6

Inserts for high currents.

The standard connector insert is suitable for current load up to 35 A and can be used, for example, in drive systems or mechanical engineering.

Info

Standard insert for currents up to 35A
 Railway applications
 Made in Germany



Mechanical and plant engineering



Robust



Temperature-resistant

Benefits

High rating for currents up to 35 A

Screw termination up to a conductor cross section of 6 mm²

Railway applications

- Fire protection on railway vehicles: Test according EN 45545-2. Requirement sets R22 and R23. Hazard level HL1, HL2 and HL3

UL tested for application in control cabinets according UL 508 / UL 2237

Application range

Plant engineering

Mechanical engineering

Drive systems

Railway applications / vehicle construction

Technical Data

Last Update (13.07.2024)

©2024 Lapp Group - Technical changes reserved

Product Management www.lappkabel.de

You can find the current technical data in the corresponding data sheet.

PN 0456 / 02_03.16

EPIC® H-BS 6

Classification ETIM 5:	ETIM 5.0 Class-ID: EC000438 ETIM 5.0 Class-Description: Contact insert for industrial connectors
Classification ETIM 6:	ETIM 6.0 Class-ID: EC000438 ETIM 6.0 Class-Description: Contact insert for industrial connectors
Rated voltage (V):	IEC: 500 VUL: 600 VCSA: 600 V Conductor - conductor: 690 V
Rated impulse voltage:	6 kV
Rated current (A):	IEC: 35 A UL: 35 A CSA: 35 A
Pollution degree:	3
Contact resistance:	< 2 mOhm
Contacts:	Copper alloy, hard silver-plated
Number of contacts:	6 + PE
Termination methods:	Screw termination: 0.5 - 6 mm ²
Stripping length (mm):	8
Cycle of mechanical operation:	100
VDE-tested:	Certified production control: VDE-REG. no.: B437 UL-tested: UL File Number: E75770 and E483837
Temperature range:	-40°C to +100°C, short-term up to +125°C

Note

Prices are net prices without VAT and surcharges. Sale to business customers only.



EPIC® H-BS 6

Article number	Article description	Contact type	Wire protection	Number of operating contacts	Packaging unit
H-BS 6 screw termination					
10170000	H-BS 6 SS	male	yes	1 - 6	5
10171000	H-BS 6 BS	female	yes	1 - 6	5

Last Update (13.07.2024)

©2024 Lapp Group - Technical changes reserved

Product Management www.lappkabel.de

You can find the current technical data in the corresponding data sheet.

PN 0456 / 02_03_16

EPIC® H-BS 6

