

EPIC® H-BVE 10

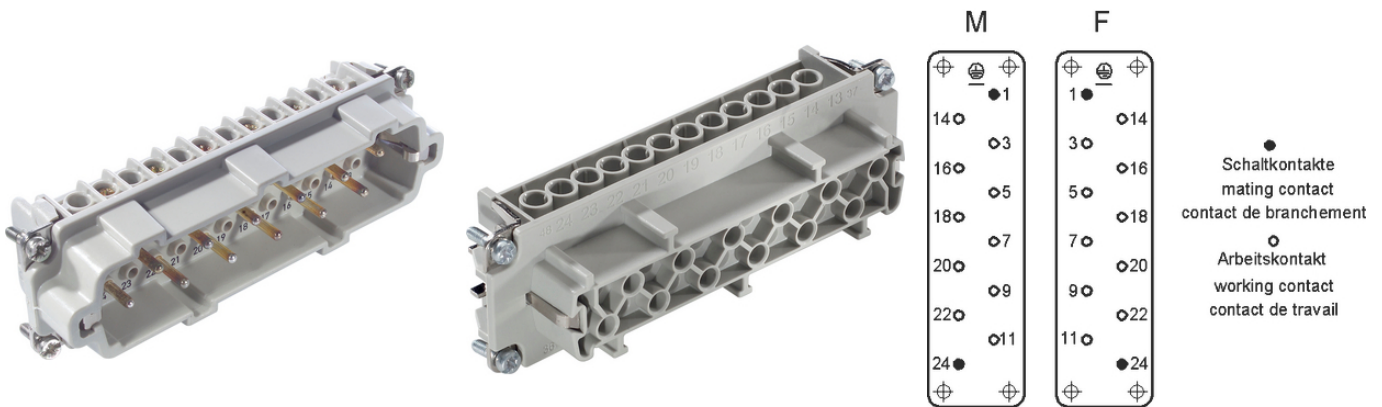
These high-voltage inserts are additionally equipped with 2 switching contacts

The multi-pole insert enables switching operation for disconnecting loads and can be used in investment construction.

Info

Multipole insert with lagging switch contacts

Switching operations possible for disconnecting under load



Temperature-resistant

Benefits

With the relevant wiring, the lagging switch contacts interrupt the power supply before the working contacts are separated

These high-voltage inserts are additionally equipped with 2 switching contacts

Application range

Mechanical engineering

Plant engineering

Technical Data

Classification ETIM 5:

ETIM 5.0 Class-ID: EC000438

ETIM 5.0 Class-Description: Contact insert for industrial connectors

Classification ETIM 6:

ETIM 6.0 Class-ID: EC000438

ETIM 6.0 Class-Description: Contact insert for industrial connectors

Rated voltage (V):

IEC: 630 V
 UL: 600 V
 CSA: 600 V

Rated impulse voltage:

6 kV

Rated current (A):

IEC: 16 A

Last Update (26.04.2024)

©2024 Lapp Group - Technical changes reserved

Product Management www.lappkabel.de

You can find the current technical data in the corresponding data sheet.

PN 0456 / 02_03.16

EPIC® H-BVE 10

	UL: 16 A CSA: 16 A
Pollution degree:	3
Contact resistance:	< 2 mOhm
Contacts:	Copper alloy, hard silver-plated
Number of contacts:	10 + 2 + PE
Termination methods:	Screw termination: 0.5 - 2.5 mm ²
Stripping length (mm):	8
Cycle of mechanical operation:	100
VDE-tested:	Certified production control: VDE-REG. no.: B437 UL-tested: UL File Number: E75770
Temperature range:	-40°C to +100°C, short-term up to +125°C

Note

Prices are net prices without VAT and surcharges. Sale to business customers only.

EPIC® H-BVE 10

Article number	Article description	Contact type	Wire protection	Number of operating contacts	Pieces / PU
H-BVE 10 screw termination					
10270010	H-BVE 10 SS	male	yes	10 + 2	5
10271010	H-BVE 10 BS	female	yes	10 + 2	5
10270110	H-BVE 10 SS	male	-	10 + 2	5
10271110	H-BVE 10 BS	female	-	10 + 2	5

EPIC® H-BVE 10

