

## EPIC® H-BVE 3

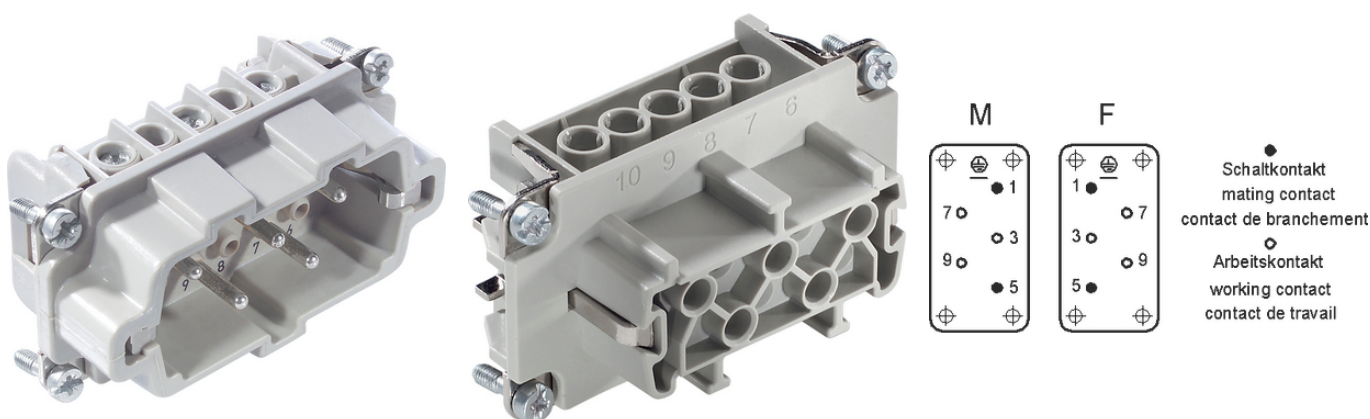
These high-voltage inserts are additionally equipped with 2 switching contacts

The multi-pole insert has delayed switching contacts, which interrupt the power supply of the respective connection before the working contacts are disconnected.

### Info

Multipole insert with lagging switch contacts

Switching operations possible for disconnecting under load



Mechanical and plant engineering



Temperature-resistant

### Benefits

These high-voltage inserts are additionally equipped with 2 switching contacts

With the relevant wiring, the lagging switch contacts interrupt the power supply before the working contacts are separated

### Application range

Plant engineering

Mechanical engineering

### Technical Data

Classification ETIM 5:

ETIM 5.0 Class-ID: EC000438

ETIM 5.0 Class-Description: Contact insert for industrial connectors

Classification ETIM 6:

ETIM 6.0 Class-ID: EC000438

ETIM 6.0 Class-Description: Contact insert for industrial connectors

Rated voltage (V):

IEC: 630 V

UL: 600 V

Last Update (23.04.2024)

©2024 Lapp Group - Technical changes reserved

Product Management [www.lappkabel.de](http://www.lappkabel.de)

You can find the current technical data in the corresponding data sheet.

PN 0456 / 02\_03.16

**EPIC® H-BVE 3**

	CSA: 600 V
Rated impulse voltage:	6 kV
Rated current (A):	IEC: 16 A UL: 16 A CSA: 16 A
Pollution degree:	3
Contact resistance:	< 2 mOhm
Contacts:	Copper alloy, hard silver-plated
Number of contacts:	3 + 2 + PE
Termination methods:	Screw termination: 0.5 - 2.5 mm <sup>2</sup>
Stripping length (mm):	8
Cycle of mechanical operation:	100
VDE-tested:	Certified production control: VDE-REG. no.: B437 UL-tested: UL File Number: E75770
Temperature range:	-40°C to +100°C, short-term up to +125°C

**Note**

Prices are net prices without VAT and surcharges. Sale to business customers only.

**EPIC® H-BVE 3**

Article number	Article description	Contact type	Wire protection	Number of operating contacts	Pieces / PU
H-BVE 3 screw termination					
10210010	H-BVE 3 SS	male	yes	3 + 2	10
10211010	H-BVE 3 BS	female	yes	3 + 2	10
10210110	H-BVE 3 SS	male	-	3 + 2	10
10211110	H-BVE 3 BS	female	-	3 + 2	10

## EPIC® H-BVE 3

