

EPIC® H-BVE 3

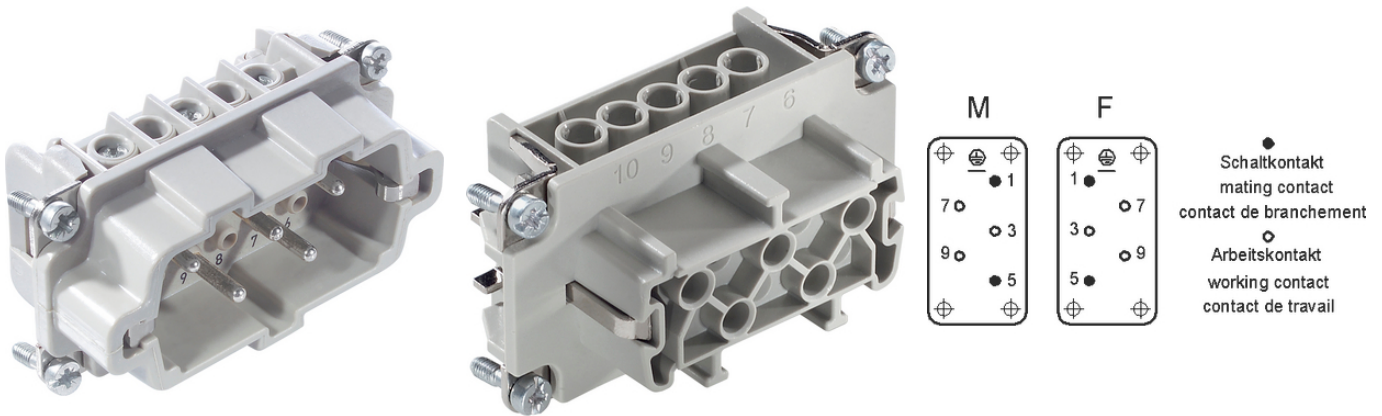
These high-voltage inserts are additionally equipped with 2 switching contacts

The multi-pole insert has delayed switching contacts, which interrupt the power supply of the respective connection before the working contacts are disconnected.

Info

Multipole insert with lagging switch contacts

Switching operations possible for disconnecting under load



Mechanical and plant engineering



Temperature-resistant

Benefits

These high-voltage inserts are additionally equipped with 2 switching contacts

With the relevant wiring, the lagging switch contacts interrupt the power supply before the working contacts are separated

Application range

Plant engineering

Mechanical engineering

Technical Data

Classification ETIM 5:

ETIM 5.0 Class-ID: EC000438

ETIM 5.0 Class-Description: Contact insert for industrial connectors

Classification ETIM 6:

ETIM 6.0 Class-ID: EC000438

ETIM 6.0 Class-Description: Contact insert for industrial connectors

Rated voltage (V):

IEC: 630 V

UL: 600 V

CSA: 600 V

Last Update (16.05.2025)

©2025 Lapp Group - Technical changes reserved

Product Management www.lappkabel.de

You can find the current technical data in the corresponding data sheet.

PN 0456 / 02_03.16

EPIC® H-BVE 3

Rated impulse voltage:	6 kV
Rated current (A):	IEC: 16 A UL: 16 A CSA: 16 A
Pollution degree:	3
Contact resistance:	< 2 mOhm
Contacts:	Copper alloy, hard silver-plated
Number of contacts:	3 + 2 + PE
Termination methods:	Screw termination: 0.5 - 2.5 mm ²
Stripping length (mm):	8
Cycle of mechanical operation:	100
VDE-tested:	Certified production control: VDE-REG. no.: B437 UL-tested: UL File Number: E75770
Temperature range:	-40°C to +100°C, short-term up to +125°C

Note

Prices are net prices without VAT and surcharges. Sale to business customers only.

EPIC® H-BVE 3

Article number	Article description	Contact type	Wire protection	Number of operating contacts	Packaging unit
H-BVE 3 screw termination					
10210010	H-BVE 3 SS	male	yes	3 + 2	10
10211010	H-BVE 3 BS	female	yes	3 + 2	10
10210110	H-BVE 3 SS	male	-	3 + 2	10
10211110	H-BVE 3 BS	female	-	3 + 2	10

Last Update (16.05.2025)

©2025 Lapp Group - Technical changes reserved

Product Management www.lappkabel.de

You can find the current technical data in the corresponding data sheet.

PN 0456 / 02_03_16

EPIC® H-BVE 3

