

## EPIC® H-BVE 6

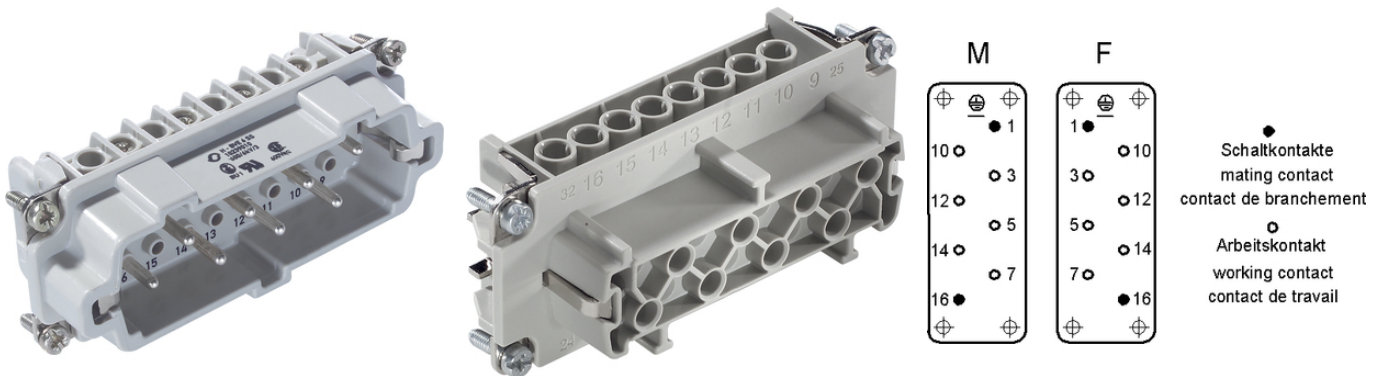
These high-voltage inserts are additionally equipped with 2 switching contacts

The multi-pole high-voltage insert has two switching contacts and is the ideal solution for investment construction and mechanical engineering.

### Info

Multipole insert with lagging switch contacts

Switching operations possible for disconnecting under load



Temperature-resistant

### Benefits

These high-voltage inserts are additionally equipped with 2 switching contacts

With the relevant wiring, the lagging switch contacts interrupt the power supply before the working contacts are separated

### Application range

Mechanical engineering  
Plant engineering

### Technical Data

Classification ETIM 5:

ETIM 5.0 Class-ID: EC000438

ETIM 5.0 Class-Description: Contact insert for industrial connectors

Classification ETIM 6:

ETIM 6.0 Class-ID: EC000438

ETIM 6.0 Class-Description: Contact insert for industrial connectors

Rated voltage (V):

IEC: 630 V  
UL: 600 V  
CSA: 600 V

Rated impulse voltage:

6 kV

Rated current (A):

IEC: 16 A

Last Update (05.07.2019)

©2019 Lapp Group - Technical changes reserved

Product Management [www.lappkabel.de](http://www.lappkabel.de)

You can find the current technical data in the corresponding data sheet.

PN 0456 / 02\_03.16

**EPIC® H-BVE 6**

	UL: 16 A
	CSA: 16 A
Pollution degree:	3
Contact resistance:	< 2 mOhm
Contacts:	Copper alloy, hard silver-plated
Number of contacts:	6 + 2 + PE
Termination methods:	Screw termination: 0.5 - 2.5 mm <sup>2</sup>
Stripping length (mm):	8
Cycle of mechanical operation:	100
VDE-tested:	Certified production control: VDE-REG. no.: B437
	UL-tested:
	UL File Number: E75770
Temperature range:	-40°C to +100°C, short-term up to +125°C

**Note**

Prices are net prices without VAT and surcharges. Sale to business customers only.

**EPIC® H-BVE 6**

Article number	Article description	Contact type	Wire protection	Number of operating contacts	Pieces / PU
H-BVE 6 screw termination					
10239010	H-BVE 6 SS	male	yes	6 + 2	5
10240010	H-BVE 6 BS	female	yes	6 + 2	5
10239110	H-BVE 6 SS	male	-	6 + 2	5
10240110	H-BVE 6 BS	female	-	6 + 2	5

Last Update (05.07.2019)

©2019 Lapp Group - Technical changes reserved

Product Management [www.lappkabel.de](http://www.lappkabel.de)You can find the current technical data in the corresponding data sheet.  
PN 0456 / 02\_03\_16

**EPIC® H-BVE 6**

