

EPIC® H-D 15 stamped

Multi-pole inserts for stamped crimp contacts

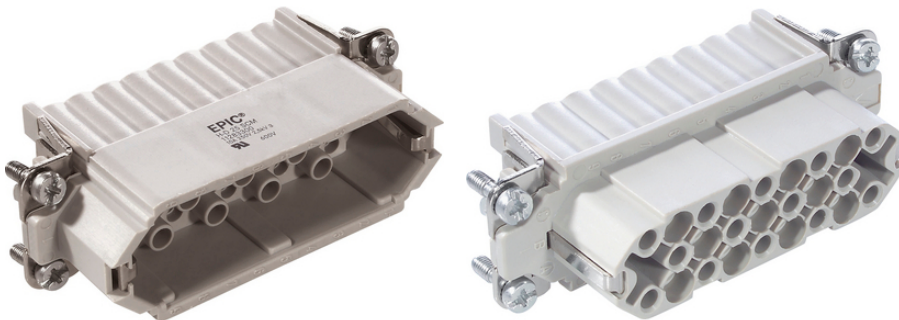
The H-D insert for pressed and machined crimped contacts is the ideal and reliable option for use in control systems.

Info

for automated production with crimping machine

Suitable for processing with contacts on reel

Made in Europe



Space requirement



Robust

Benefits

Inserts of the connector series H-D are designed for applications in which a high number of contacts are required.

Application range

Machine and equipment manufacturing

Control engineering

Technical Data

Classification ETIM 5:

ETIM 5.0 Class-ID: EC000438

ETIM 5.0 Class-Description: Contact insert for industrial connectors

Classification ETIM 6:

ETIM 6.0 Class-ID: EC000438

ETIM 6.0 Class-Description: Contact insert for industrial connectors

Rated voltage (V):

IEC: 250 V

UL: 250 V

Rated impulse voltage:

2.5 kV

Last Update (23.04.2024)

©2024 Lapp Group - Technical changes reserved

Product Management www.lappkabel.de

You can find the current technical data in the corresponding data sheet.

PN 0456 / 02_03.16

EPIC® H-D 15 stamped

Rated current (A):	IEC: 10 A UL: 10 A
Pollution degree:	3
Contact resistance:	< 2 mOhm
Contacts:	Copper alloy, hard silver/gold-plated
Number of contacts:	15 + PE
Termination methods:	Crimp termination: 0.14 - 2.5 mm ²
Cycle of mechanical operation:	100
Certifications:	Certified production control: VDE-REG. no.: B437 UL-tested: UL File Number: E75770
Temperature range:	-40°C to +100°C, short-term up to +125°C

Note

Photographs and graphics are not to scale and do not represent detailed images of the respective products.
Prices are net prices without VAT and surcharges. Sale to business customers only.

EPIC® H-D 15 stamped

Article number	Article description	Contact type	Article designation	Number of operating contacts	Pieces / PU
11255000	H-D 15 SCG	male	stamped	1 - 15	5
11256000	H-D 15 BCG	female	stamped	1 - 15	5