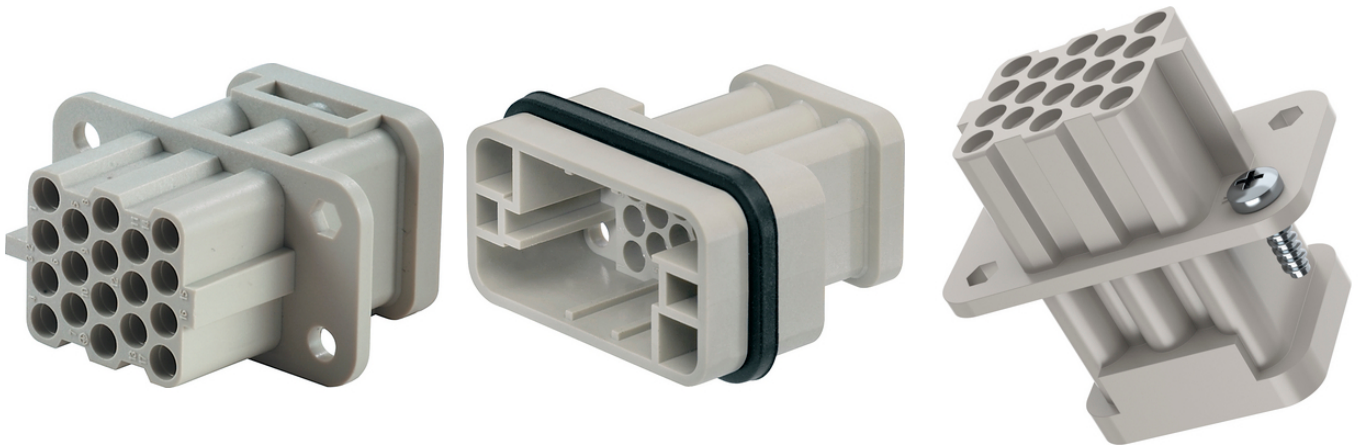


EPIC® H-Q 17

This compact rectangular connector insert ensures that there is a powerful drive every time. The 17-pin variant is suitable for supplying power to servo drives, for example, and can be (semi-)automatically assembled with a cable thanks to crimp termination technology.



Benefits

High power up to 10 A despite extremely space-saving design for very small devices.

Crimp connection creates a vibration-proof connection, ensures maximum contacting reliability between contact and cable and is suitable for automated assembly.

Mateable with market standard connectors.

Application range

For power supply connection of devices and machines in various applications.

Typical areas of application are electric motors and servo drives.

For use with housings of the EPIC® H-Q series.

Technical Data

Classification ETIM 5:	ETIM 5.0 Class-ID: EC000438
Classification ETIM 6:	ETIM 6.0 Class-ID: EC000438 ETIM 6.0 Class-Description: Contact insert for industrial connectors
Rated voltage (V):	IEC: 250 V UL: 600 V CSA: 600 V
Rated impulse voltage:	4 kV
Rated current (A):	max. 10 A
Pollution degree:	2
Contact resistance:	< 2 mOhm
Contacts:	Copper alloy, hard silver/gold-plated
Number of contacts:	17 + PE
Termination methods:	Crimp termination: 0.14 - 2.5 mm ²
Cycle of mechanical operation:	500
Temperature range:	-40 °C to +125 °C

Last Update (20.04.2024)

©2024 Lapp Group - Technical changes reserved

Product Management www.lappkabel.de

You can find the current technical data in the corresponding data sheet.

PN 0456 / 02_03.16

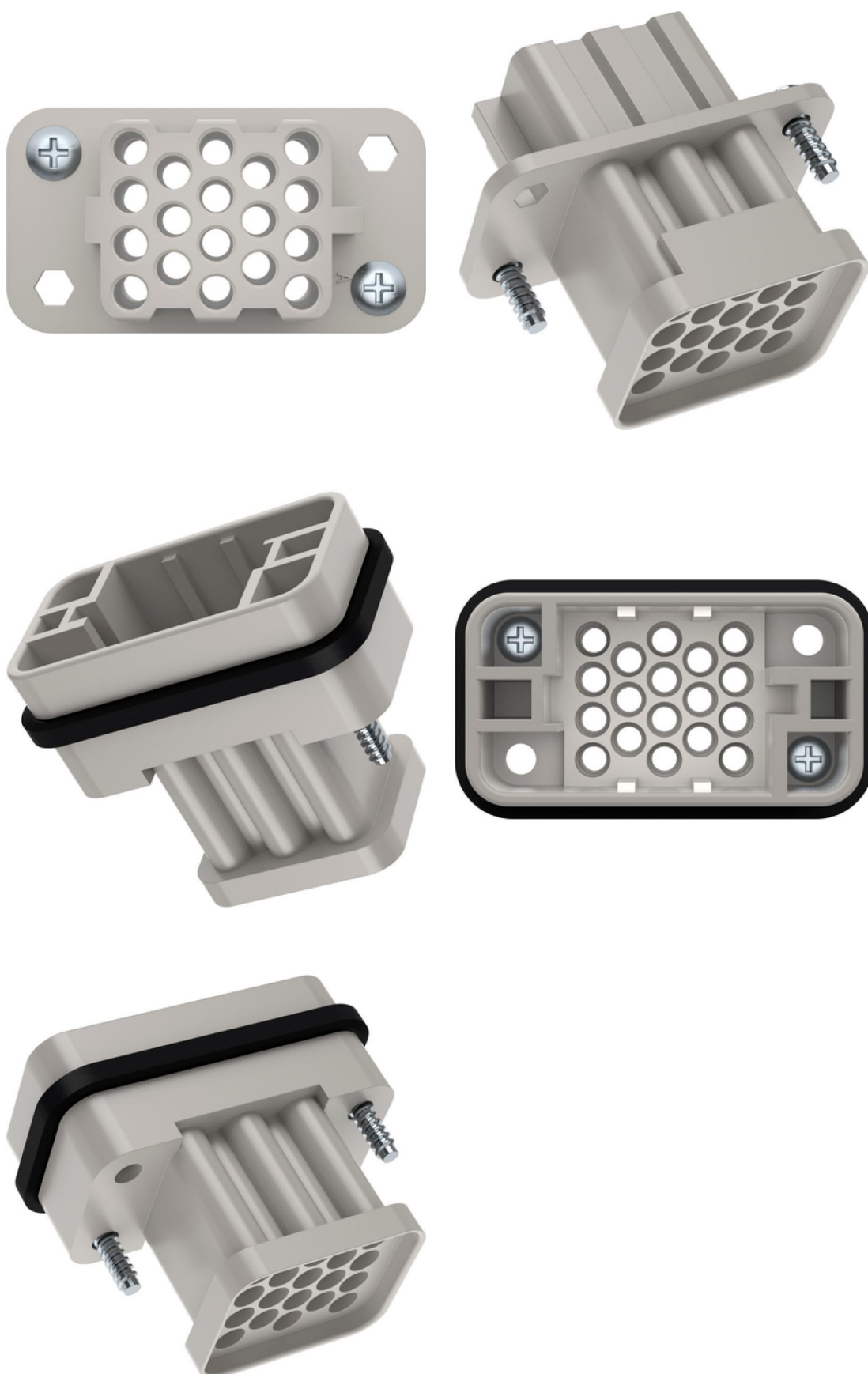
EPIC® H-Q 17

Note

Photographs and graphics are not to scale and do not represent detailed images of the respective products.
Prices are net prices without VAT and surcharges. Sale to business customers only.

EPIC® H-Q 17

Article number	Article description	Contact type	Article designation	Number of operating contacts	Pieces / PU
H-Q 17 crimp termination					
44420525	H-Q 17 SCM	male	machined	1 - 17	1
44420524	H-Q 17 BCM	female	machined	1 - 17	1
44423377	H-Q 17 BCM	female	machined	1 - 17	1
44423376	H-Q 17 SCM	male	machined	1 - 17	1

EPIC® H-Q 17

Last Update (20.04.2024)

©2024 Lapp Group - Technical changes reserved

Product Management www.lappkabel.de

You can find the current technical data in the corresponding data sheet.

PN 0456 / 02_03.16