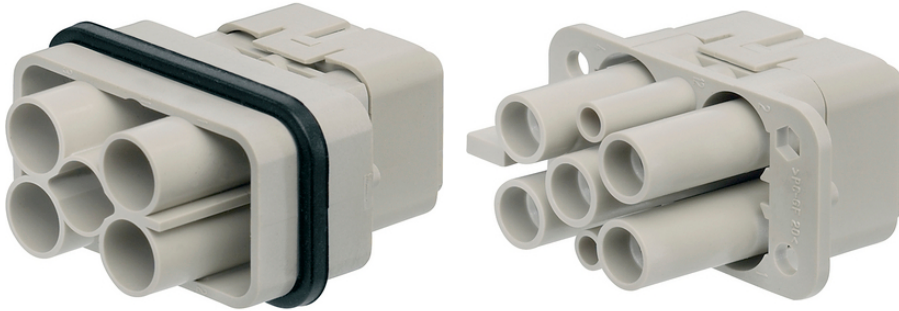


EPIC® H-Q 4+2

EPIC® H-Q 4+2 Inserts for H-Q rectangular series

Info

4 power contacts + 2 signal contacts



Benefits

Insert suitable for plastic and metal housings
Space-saving

Application range

Servo applications - power drive systems
Mechanical engineering
Plant engineering

Technical Data

Classification ETIM 5:	ETIM 5.0 Class-ID: EC000438
Classification ETIM 6:	ETIM 6.0 Class-ID: EC000438 ETIM 6.0 Class-Description: Contact insert for industrial connectors
Rated voltage (V):	IEC: 400/690 V (H-Q contacts) UL: 600 V (H-Q contacts) CSA: 600 V (H-Q contacts)
Rated impulse voltage:	6KV (H-Q 4 mm contacts) 4KV (H-D 1.6 mm contacts)
Rated current (A):	IEC: 40 A (H-Q 4 mm contacts) 10 A (H-D 1.6 mm contacts)
Pollution degree:	3
Contact resistance:	< 4 mOhm
Contacts:	Copper alloy, hard silver-plated
Number of contacts:	4 + 2 + PE
Termination methods:	Crimp termination: 1.5 - 6.0 mm ² (H-Q 4 mm contacts) 0.14 - 2.5 mm ² (H-Q 1.6 mm contacts)
Cycle of mechanical operation:	500
Temperature range:	-40°C to +125°C

Last Update (05.06.2023)

©2023 Lapp Group - Technical changes reserved

Product Management www.lappkabel.de

You can find the current technical data in the corresponding data sheet.

PN 0456 / 02_03.16

EPIC® H-Q 4+2

Note

Photographs and graphics are not to scale and do not represent detailed images of the respective products.
Prices are net prices without VAT and surcharges. Sale to business customers only.

EPIC® H-Q 4+2

Article number	Article description	Contact type	Article designation	Number of operating contacts	Pieces / PU
H-Q 4+2 crimp termination					
44420511	H-Q 4+2 SCM	male	machined	4 + 2	1
44420510	H-Q 4+2 BCM	female	machined	4 + 2	1

Last Update (05.06.2023)

©2023 Lapp Group - Technical changes reserved

Product Management www.lappkabel.de

You can find the current technical data in the corresponding data sheet.

PN 0456 / 02_03.16